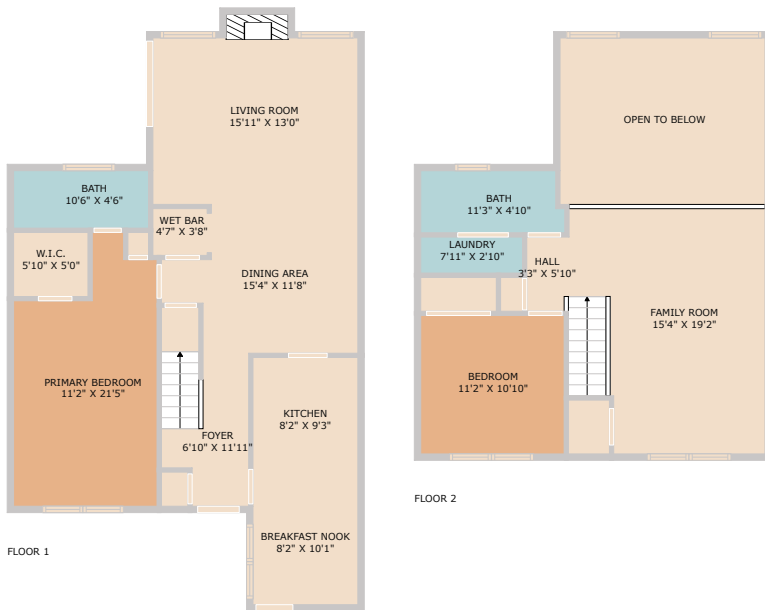
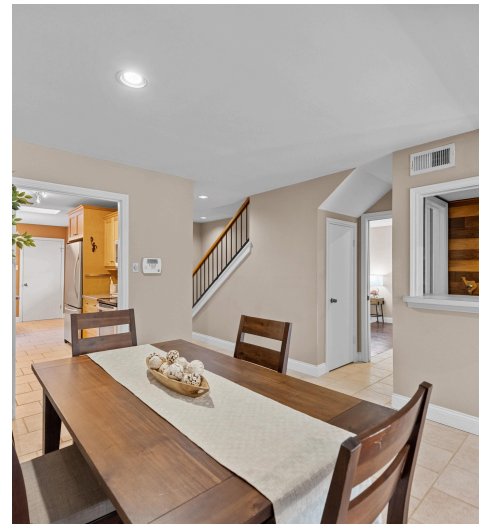
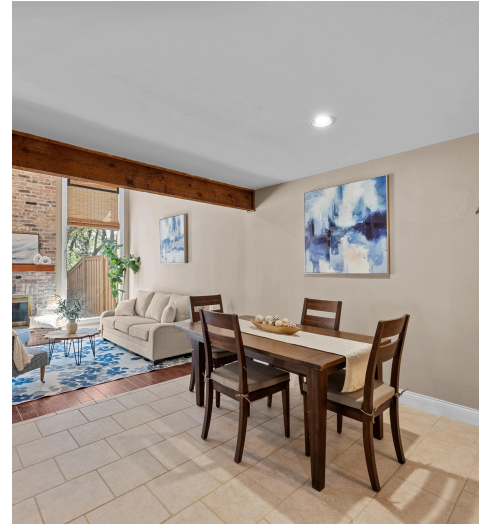


8303 Summerwood Drive
Austin, TX 78759



See online or with your mobile device:
<https://8303summerwooddrive.mls.tours>





TWIST TOURS

TOTAL: 1493 sq. ft.
 FLOOR 1: 939 sq. ft., FLOOR 2: 554 sq. ft.
 EXCLUDED AREAS: FIREPLACE: 11 sq. ft., OPEN TO BELOW: 209 sq. ft.
 Floor Plan Created by Cubicasa App. Measurements Deemed Highly Reliable But Not Guaranteed.

© 2025 TBD. All rights reserved. This floor plan is an approximation of existing structures and features and is provided for convenience only with the permission of the seller. All measurements are approximate and not guaranteed to be exact or to scale. Buyer should confirm measurements using their own sources.

