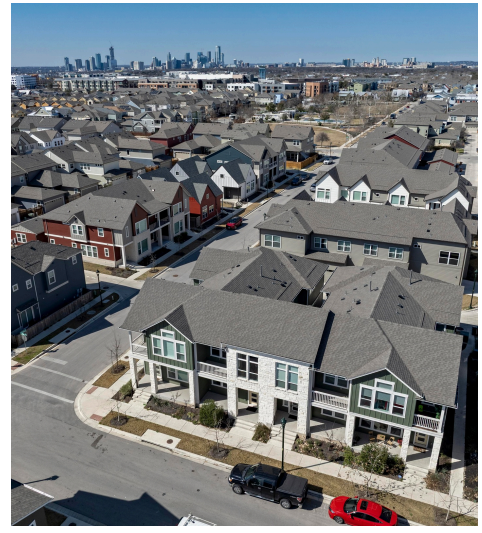
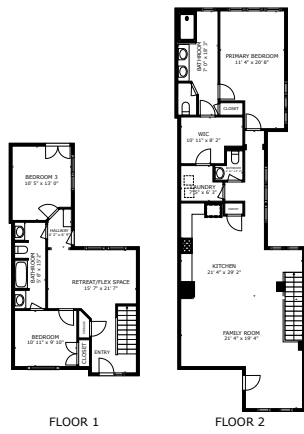


4202 Taniguchi Street
Austin, TX 78723



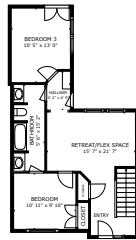
See online or with your mobile device:
<https://www.4202taniguchi.com>





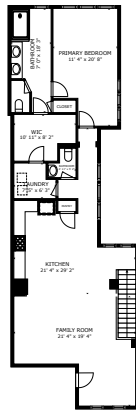
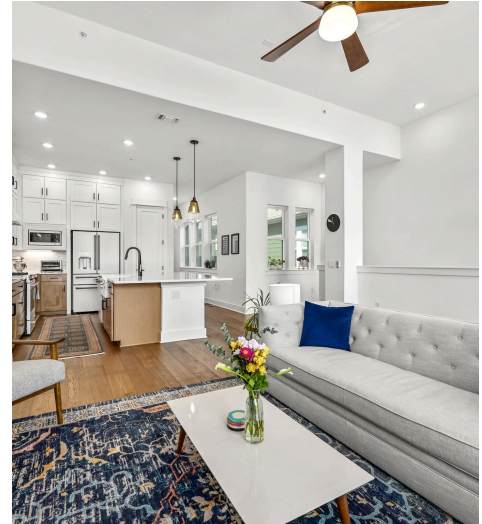
FLOOR 1 FLOOR 2

GROSS INTERNAL AREA
 FLOOR 1 633 sq.ft. FLOOR 2 1,208 sq.ft.
 TOTAL : 1,841 sq.ft.
 SIZES AND DIMENSIONS ARE APPROXIMATE, ACTUAL MAY VARY.



FLOOR 1

GROSS INTERNAL AREA
 FLOOR 1 633 sq.ft. FLOOR 2 1,208 sq.ft.
 TOTAL : 1,841 sq.ft.
 SIZES AND DIMENSIONS ARE APPROXIMATE, ACTUAL MAY VARY.



FLOOR 2

GROSS INTERNAL AREA
 FLOOR 1 633 sq.ft. FLOOR 2 1,208 sq.ft.
 TOTAL : 1,841 sq.ft.
 SIZES AND DIMENSIONS ARE APPROXIMATE, ACTUAL MAY VARY.



Greg Vassaur

Broker Associate

📞 512.587.9528

✉️ greg.vassaur@kupersir.com

🌐 lewisgroupatx.com



© 2025 TBD. All rights reserved. This floor plan is an approximation of existing structures and features and is provided for convenience only with the permission of the seller. All measurements are approximate and not guaranteed to be exact or to scale. Buyer should confirm measurements using their own sources.

