

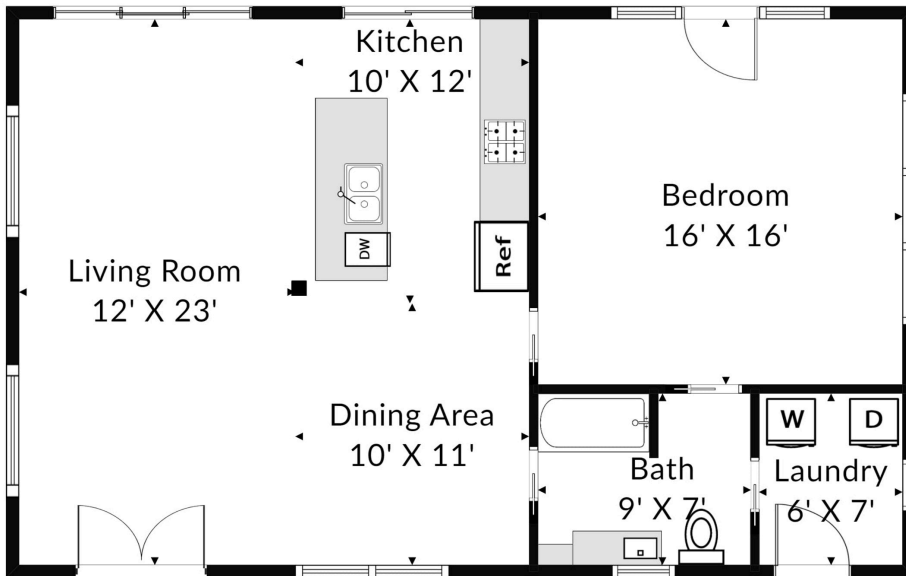
1081 Shovel Mountain Road

Cypress Mill, TX 78663

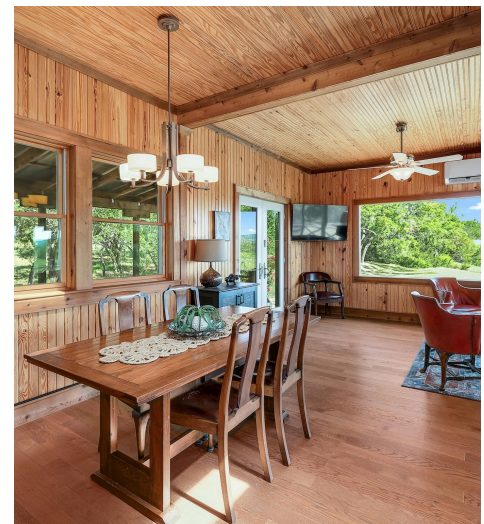


See online or with your mobile device:
<https://1081shovelmountainroad.mls.tours>





Room dimensions rounded to the nearest foot



Chrissy Caputo

Broker/ Owner

📞 512-748-4650

✉️ chrissy@austinsummitgroup.com

🌐 www.austinsummitgroup.com/



© 2025 331 Enterprises, LLC. All rights reserved. This floor plan is an approximation of existing structures and features and is provided for convenience only with the permission of the seller. All measurements are approximate and not guaranteed to be exact or to scale. Buyer should confirm measurements using their own sources.