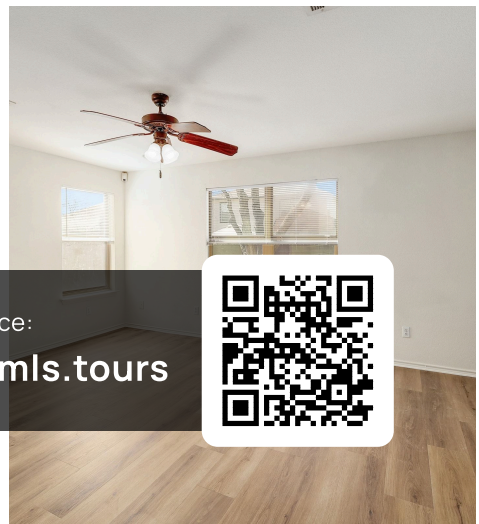
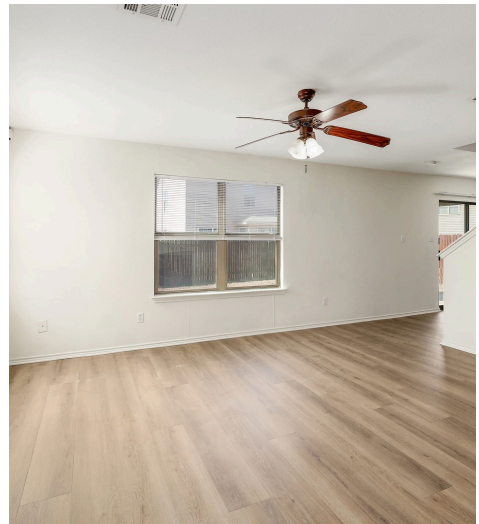


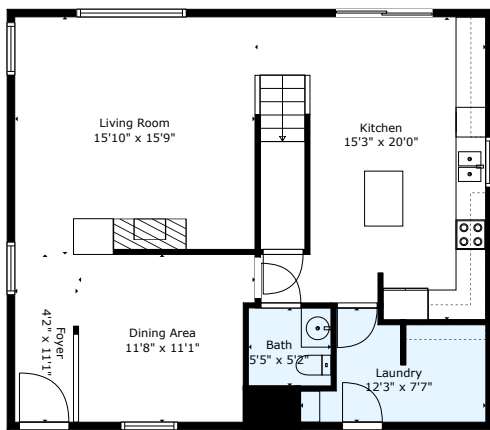
3502 Sandy Brook Drive

Round Rock, TX 78665



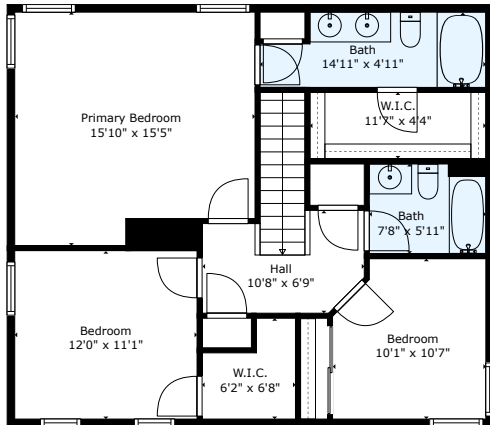
See online or with your mobile device:
<https://3502sandybrookdrive.mls.tours>





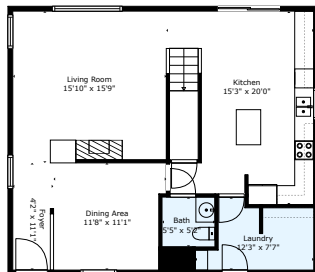
TOTAL: 1670 sq. ft.
1st floor: 835 sq. ft., 2nd floor: 835 sq. ft.
EXCLUDED AREAS: WALLS: 118 sq. ft.

Floor Plan Created By: Calcsuite App. Measurements Estimated Highly Accurate But Not Guaranteed.

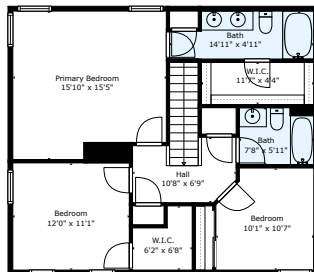


TOTAL: 1670 sq. ft.
1st floor: 835 sq. ft., 2nd floor: 835 sq. ft.
EXCLUDED AREAS: WALLS: 118 sq. ft.

Floor Plan Created By: Calcsuite App. Measurements Estimated Highly Accurate But Not Guaranteed.



1st Floor



2nd Floor

TOTAL: 1670 sq. ft.
1st floor: 835 sq. ft., 2nd floor: 835 sq. ft.
EXCLUDED AREAS: WALLS: 118 sq. ft.

Floor Plan Created By: Calcsuite App. Measurements Estimated Highly Accurate But Not Guaranteed.



Marty Kelly

Broker

📞 5125630799

✉️ martykelly@kw.com

mlkw
MARTY KELLY KELLER WILLIAMS
BROKER REALTY

© 2026 331 Enterprises, LLC. All rights reserved. This floor plan is an approximation of existing structures and features and is provided for convenience only with the permission of the seller. All measurements are approximate and not guaranteed to be exact or to scale. Buyer should confirm measurements using their own sources.

