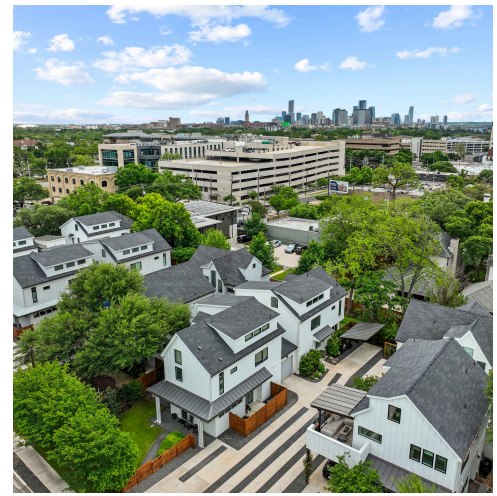
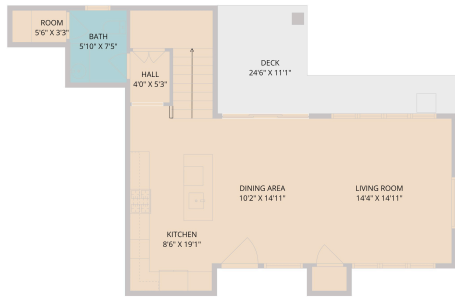


1201 West 39th 1/2 Street b
Austin, TX 78756



See online or with your mobile device:
<https://1201west39th12streetb.mls.tours>





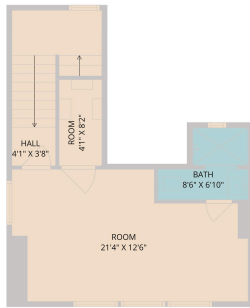
TWIST TOURS

Floor Plan Created By Callisto Apps. Measurements Based on Highest Bidder. Not for Guarantee.



TWIST TOURS

Floor Plan Created By Callisto Apps. Measurements Based on Highest Bidder. Not for Guarantee.



TWIST TOURS

Floor Plan Created By Callisto Apps. Measurements Based on Highest Bidder. Not for Guarantee.



TWIST TOURS

Floor Plan Created By Callisto Apps. Measurements Based on Highest Bidder. Not for Guarantee.

Home ID: 100907
 1201 W 29th 1/2 St, Rosedale, Austin, Travis County, Texas,
 United States, 78756, B



Total Area: 1792 sq. ft.
 1st Floor: 482 sq. ft., 2nd Floor: 881 sq. ft., 3rd Floor: 423 sq. ft.
 Excluded: Deck: 143 sq. ft., Balcony: 71 sq. ft., Walls: 118 sq. ft.

Property summary

3 Floors, 2 Bathrooms, 3 Bedrooms, 1 Half Bath

Scan completed on Thu, 01 Apr 2022 10:28:29-0400



© 2026 331 Enterprises, LLC. All rights reserved. This floor plan is an approximation of existing structures and features and is provided for convenience only with the permission of the seller. All measurements are approximate and not guaranteed to be exact or to scale. Buyer should confirm measurements using their own sources.