

NOTES:

1.THE GARAGE SHALL BE SEPERATED FORM THE RESIDENCE AND ITS ATTIC BY NOT LESS THAN 1/2 INCH GYPSUM BOARD APPLIED TO THE GARAGE SIDE AND 5/8" TYPE X GYPSUM BOARD WHERE THE SEPERATION IS A FLOOR/CEILING, PER 2015 IRC.

2. GARAGE LOCATED LESS THAN 3 FEET (12.1 mm) TYPE X BOARD APPLIED TO THE INTERIOR SIDES OF THE EXTERIOR WALLS THAT WITHIN THIS AREA.

3. OPENING FORM PRIVATE GARAGE DIRECTLY INTO A ROOM USED FOR SLEEPING PURPOSES SHALL NOT BE PERMITTED. OTHER OPENING BETWEEN THE GARAGE AND RESIDENCE SHALL BE EQUIPT WITH A SOLID WOODEN DOOR NOT LESS THAN 1 3/8 INCH WHICH SHALL BE SELF-CLOSING HAVING A FIRE PROTECTION RATING OF 20 MINUTES, PER 2015 IRC.

4.STAIRWAYS SHALL NOT BE LESS THAN 36 INCHES (914 mm) IN CLEAR AT ALL POINTS ABOVE HEIGHT PERMITTED HANDRAIL HEIGHT AND BELOW THE REQUIRED HEADROOM HEIGHT. HANDRAIL SHALL NOT PROJECT MORE THAN 4.5 INCHES (114 mm) ON EITHER SIDE OF THE STAIRWAY AT AND BELOW THE HANDRAIL HEIGHT, INCLUDING TREADS AND LANDING, SHALL NOT BE LESS THAN 31.5 INCHES (791 mm) WHERE THE HANDRAIL IS INSTALLED ON ONE SIDE AND 21 INCHES (533 mm) WHERE HANDRAILS ARE PROVIDED ON BOTH SIDES.

5. THE MAXIMUM RISER HEIGHT SHALL BE 1 3/4 INCHES AND THE MINIMUM WIDTH FOR THE TREAD SHALL BE 10 INCHES.

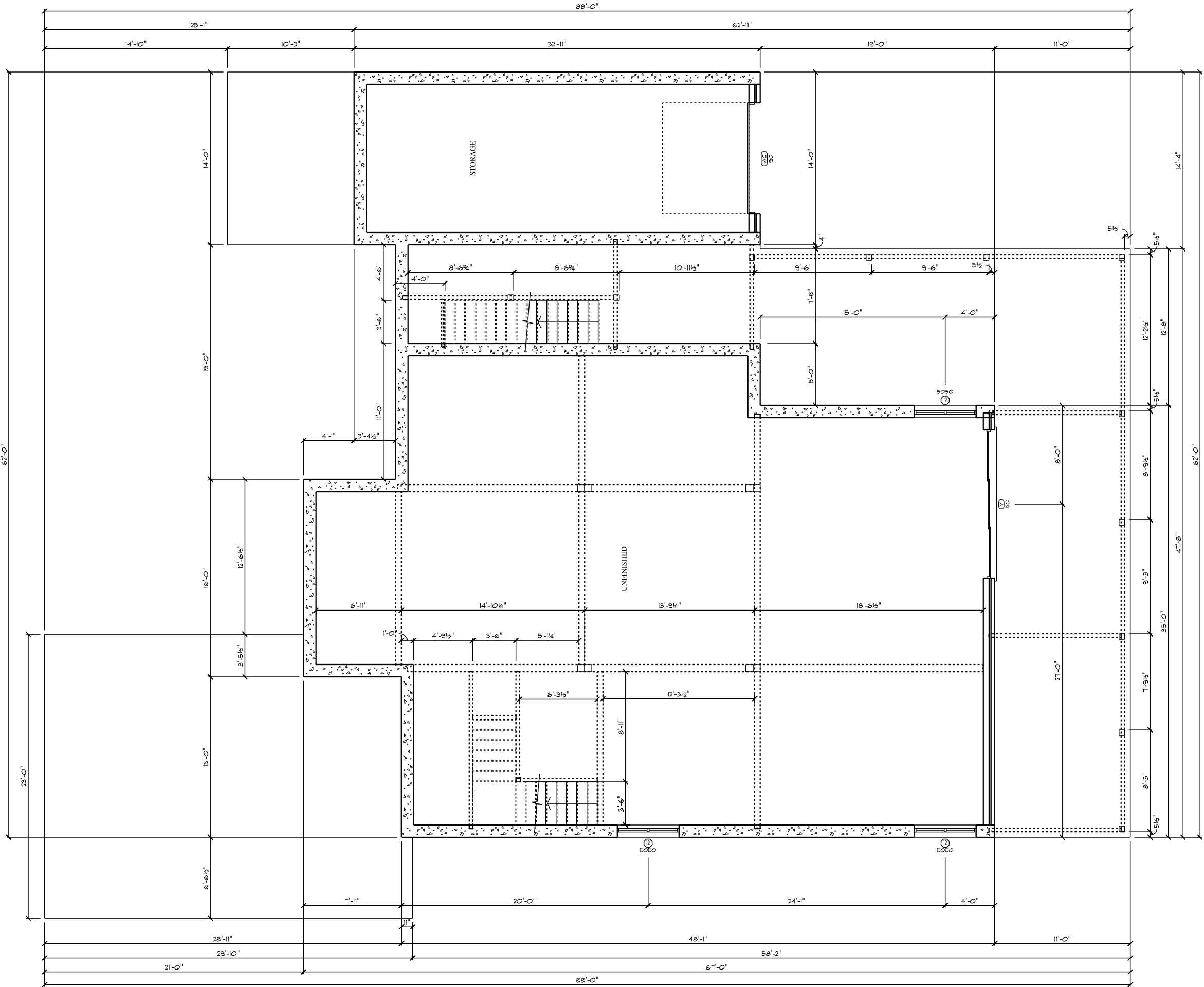
6. ENCLOSED ACCESSIBLE SPACE UNDER UNDER STAIRS SHALL HAVE WALLS, UNDER STAIR SURFACE AND ANY SOFFIT PROTECTED ON THE ENCLOSED SIDE WITH 1/2-INCH (13 mm) GYPSUM BOARD.

7. ATTICS CONTAINING APPLIANCES SHALL BE PROVIDED WITH PULL DOWN STAIR LARGE ENOUGH TO ALLOW REMOVAL OF THE LARGEST APPLIANCE AND NOT LESS THAN 22 INCHES IN WIDTH WITH A LOAD CAPACITY OF NOT LESS THAN 350 POUNDS AND A CLEAR AND UNOBSTRUCTED PASSAGEWAY LARGE ENOUGH TO ALLOW REMOVAL OF THE LARGEST APPLIANCE, BUT NOT LESS THAN 30 INCHES (762 MM) HIGH AND 30 INCHES (762 MM) WIDE AND NOT MORE THAN 20 FEET (6096 MM) LONG MEASURED ALONG THE CENTERLINE OF THE PASSAGEWAY FROM THE OPENING TO THE APPLIANCE. THE PASSAGEWAY SHALL HAVE CONTINUOUS SOLID FLOORING IN ACCORDANCE WITH 2015 IRC NOT LESS THAN 24 INCHES (610 MM) WIDE. A LEVEL SERVICE SPACE AT LEAST 30 INCHES (762 MM) DEEP AND 30 INCHES (762 MM) WIDE SHALL BE PRESENT ALONG ALL SIDES OF THE APPLIANCE WHERE ACCESS IS REQUIRED. THE CLEAR ACCESS OPENING DIMENSIONS SHALL BE A MINIMUM OF 20 INCHES BY 30 INCHES (508 MM BY 762 MM), AND LARGE ENOUGH TO ALLOW REMOVAL OF THE LARGEST APPLIANCE.

8. HAZARDOUS GLAZING SHOULD COMPLY WITH 2012 IRC SECTION R308

9. HANDRAIL AND GAURDS SHALL BE DESIGNED FOR A MINIMUM 200 POUNDS LIVE LOAD AND A SINGLE CONCENTRATED LOAD APPLIED IN ANY DIRECTION AT ANY POINT ALONG THE TOP.

OPENING SCHEDULE				
PRODUCT CODE	SIZE	HINGE	COUNT	OPENING ID
36x72 Picture Awning 1	3060	N	6	1
36x48 CASEMENT 2	3040	NN	1	2
36x72 CASEMENT 1	3060	N	3	3
60x24 TRANSOM	5020	N	7	4
60x72 Picture Awning 2 - Transom	5080	NA	2	5
24x48 SINGLE HUNG 1	2040	U	2	6
36x60 CASEMENT 1	3050	N	1	7
24x24 CASEMENT 1	2020	N	1	8
48x18 TRANSOM	4016	N	1	9
GLASS BLOCK	5080	N	1	10
36x72 Picture Awning 1	3060	N	1	11
60x60 Picture Awning 2	5050	NN	3	12
36x48 CASEMENT 2	3040	NN	1	13
48x24 TRANSOM	4020	N	4	14
60x18 TRANSOM	5016	N	2	15
48x24 TRANSOM	4020	N	3	16
48x48 CASEMENT 1 - Transom	4060	NA	1	17
36x54 Picture Awning 1	3046	N	2	18
30X80 COLONIAL POCKET 1	26	N	1	A
32X80 COLONIAL A 1	28	L	2	B
192X96 SLIDING GLASS 2	160	NLNN	1	C
24X80 COLONIAL A 1	20	L	3	D
CAMBER-MODIFIED	26	N	1	E
CAMBER-MODIFIED	40	N	1	G
104X96 ENTRY - 2 SL - Transom	88	NA	1	H
96X96 SLIDING GLASS 2	80	NL	1	I
32X96 COLONIAL A 1	28	L	1	K
32X96 COLONIAL A 1	28	R	1	K
CAMBER-MODIFIED	20	N	1	L
30X80 COLONIAL A 1	26	L	1	N
30X80 COLONIAL A 1	26	R	1	N
36X80 COLONIAL A 1	30	NA	1	O
192X84 - 8 PANEL - 4 GRILLED WINDOW	160	U	1	P
60X80 COLONIAL A 2	50	LR	1	Q
48X80 COLONIAL B 2	40	LR	1	R
24X80 COLONIAL B 1	20	L	1	S
144X80 SLIDING GLASS 2	120	NLN	1	V
72X80 SLIDING MIRROR 2	60	NN	1	X
CAMBER CASED	30	N	2	Z
FLAT-MODIFIED	24	N	1	AB
108X84 - ROLLER	90	U	1	AC
32X80 COLONIAL A 1	28	L	1	AE
36X96 GLASS 1	30	R	1	AF
24X80 COLONIAL POCKET 1	20	N	1	AG
24X80 COLONIAL A 1	20	L	1	AH



BOTTOM FLOOR

PAGE #/ A2

APPROVED: A Smith

CHECKED BY: A Smith

SECTION LETTER

PAGE NUMBER

SCALE: 1/4" = 1' D SIZE & 1/8" = 1" B SIZE.

DRAWN BY: J. Smith

DATE: 7/9/2019

Customer:
Steve & Karen Powers
465 County Road 139
Burnet TX 78611

Durand & Smith Designs
4606 FM 1960 Road West
Suite 400
Houston, Texas 77069

Durand & Smith Designs
6500 River Place BLD
Building 7, Suite 250
Austin, Texas 78730