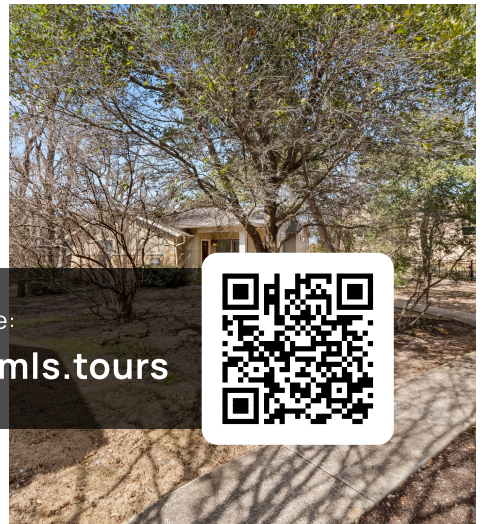
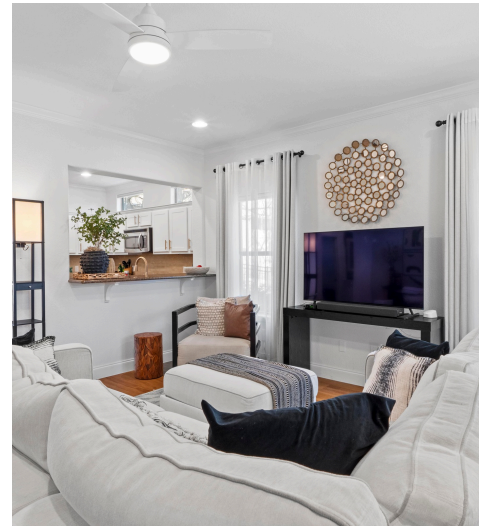


9707 Anderson Mill Road #4
Austin, TX 78750



See online or with your mobile device:
<https://9707andersonmillroad4.mls.tours>





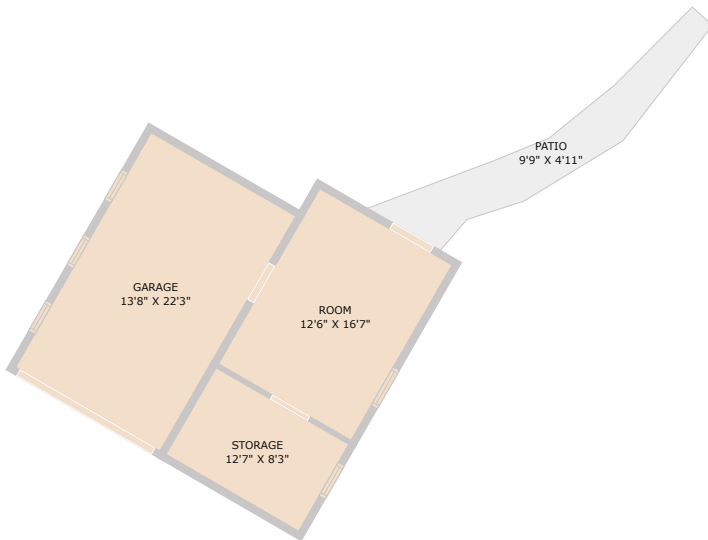
**TWIST
TOURS**

TOTAL: 1477 sq. ft.
 FLOOR 1: 160 sq. ft., FLOOR 2: 1317 sq. ft.
 EXCLUDED AREAS: STORAGE: 78 sq. ft., GARAGE: 229 sq. ft., PATIO: 84 sq. ft.,
 PORCH: 64 sq. ft.
 Floor Plan Created by Cubicasa App. Measurements Deemed Highly Reliable But Not Guaranteed.



**TWIST
TOURS**

TOTAL: 1477 sq. ft.
 FLOOR 1: 160 sq. ft., FLOOR 2: 1317 sq. ft.
 EXCLUDED AREAS: STORAGE: 78 sq. ft., GARAGE: 229 sq. ft., PATIO: 84 sq. ft.,
 PORCH: 64 sq. ft.
 Floor Plan Created by Cubicasa App. Measurements Deemed Highly Reliable But Not Guaranteed.



**TWIST
TOURS**

TOTAL: 1477 sq. ft.
 FLOOR 1: 160 sq. ft., FLOOR 2: 1317 sq. ft.
 EXCLUDED AREAS: STORAGE: 78 sq. ft., GARAGE: 229 sq. ft., PATIO: 84 sq. ft.,
 PORCH: 64 sq. ft.
 Floor Plan Created by Cubicasa App. Measurements Deemed Highly Reliable But Not Guaranteed.

© 2025 TBD. All rights reserved. This floor plan is an approximation of existing structures and features and is provided for convenience only with the permission of the seller. All measurements are approximate and not guaranteed to be exact or to scale. Buyer should measure using their own sources.

