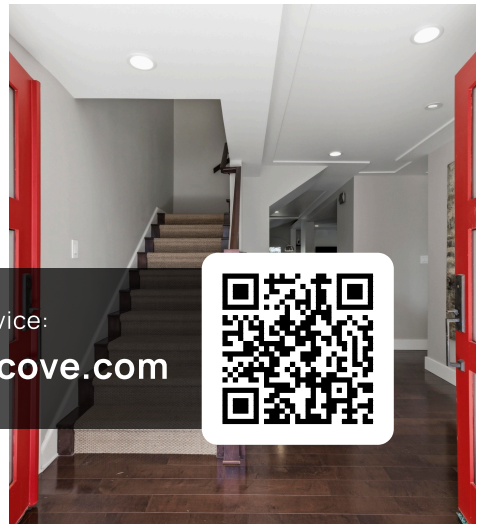
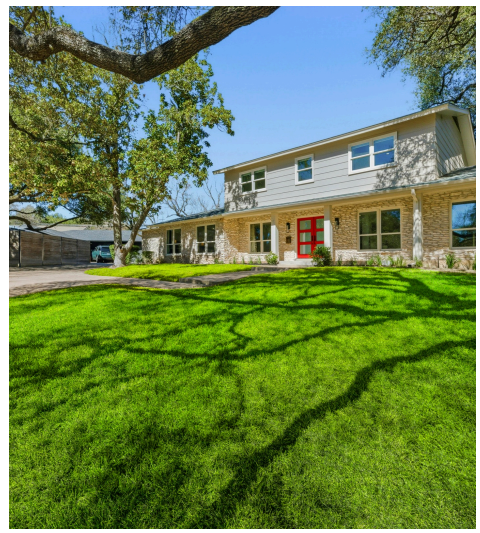
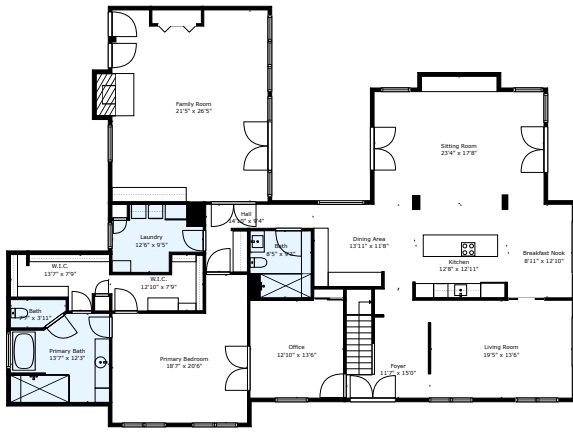


6806 Rockledge Cove
Austin, TX 78731



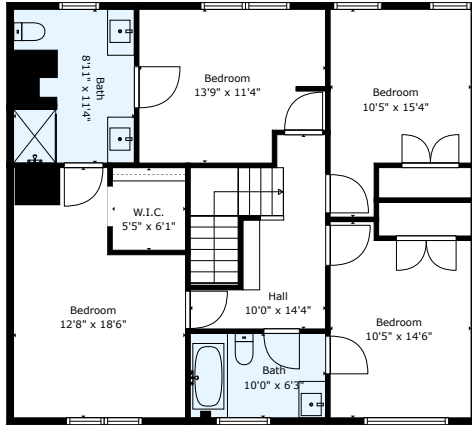
See online or with your mobile device:
<https://www.6806rockledgecove.com>





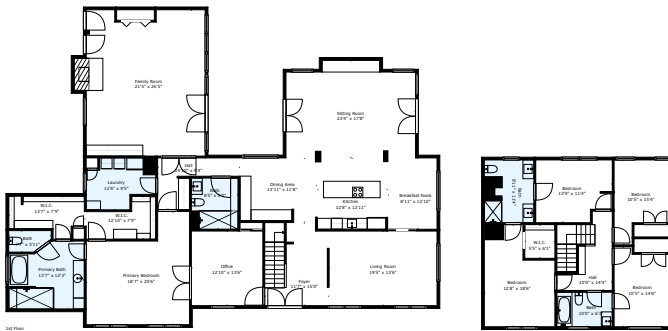
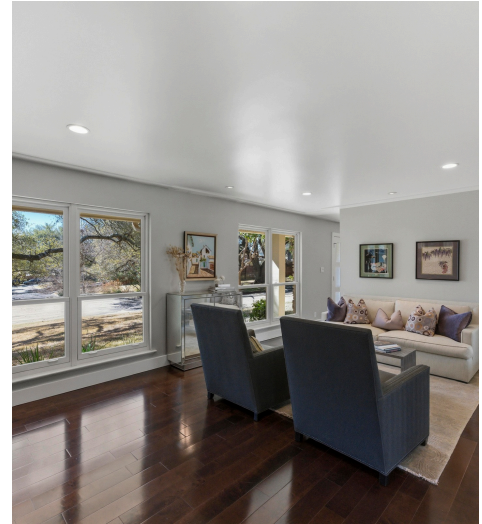
TOTAL: 4011 sq. ft.
 1st floor: 2994 sq. ft., 2nd floor: 1017 sq. ft.
 EXCLUDED AREAS: FIREPLACE: 15 sq. ft., WALLS: 215 sq. ft.

Floor Plan Created By: Coluback App. Measurements Checked Highly Accurate But Not Guaranteed.



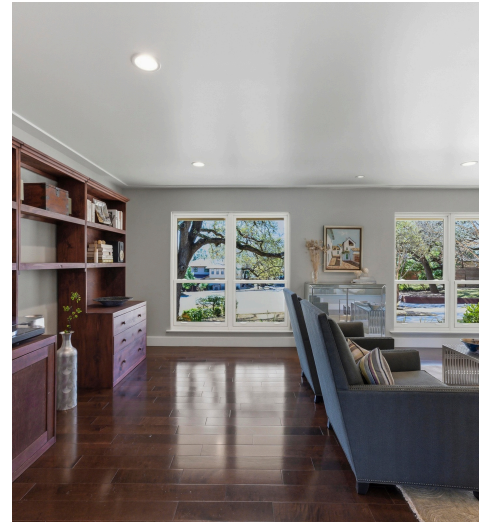
TOTAL: 4011 sq. ft.
 1st floor: 2994 sq. ft., 2nd floor: 1017 sq. ft.
 EXCLUDED AREAS: FIREPLACE: 15 sq. ft., WALLS: 215 sq. ft.

Floor Plan Created By: Coluback App. Measurements Checked Highly Accurate But Not Guaranteed.



TOTAL: 4011 sq. ft.
 1st floor: 2994 sq. ft., 2nd floor: 1017 sq. ft.
 EXCLUDED AREAS: FIREPLACE: 15 sq. ft., WALLS: 215 sq. ft.

Floor Plan Created By: Coluback App. Measurements Checked Highly Accurate But Not Guaranteed.



Rob Gordon

Listing Agent

📞 (512) 809-2131

✉️ Rob@BramlettPartners.com

🌐 bramlettpartners.com/agents/rob-gordon



© 2026 331 Enterprises, LLC. All rights reserved. This floor plan is an approximation of existing structures and features and is provided for convenience only with the permission of the seller. All measurements are approximate and not guaranteed to be exact or to scale. Buyer should confirm measurements using their own sources.