

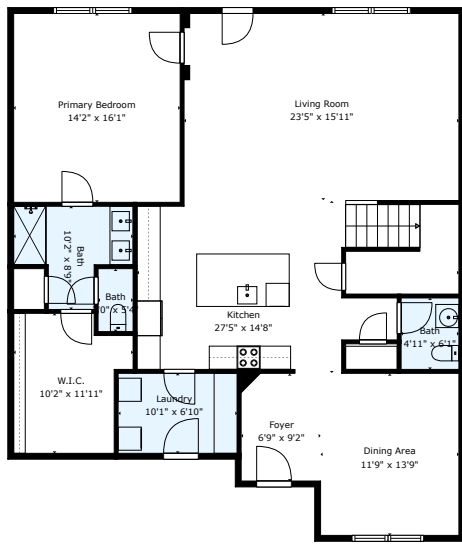
7712 Linnie Lane

Austin, TX 78724

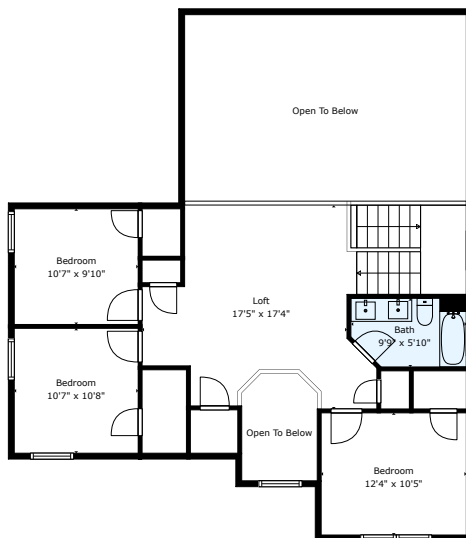


See online or with your mobile device:
<https://www.7712Linnie.com>

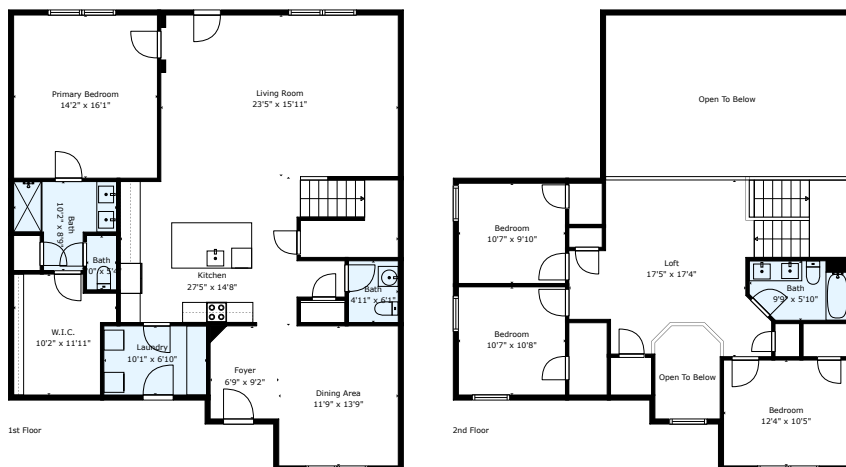
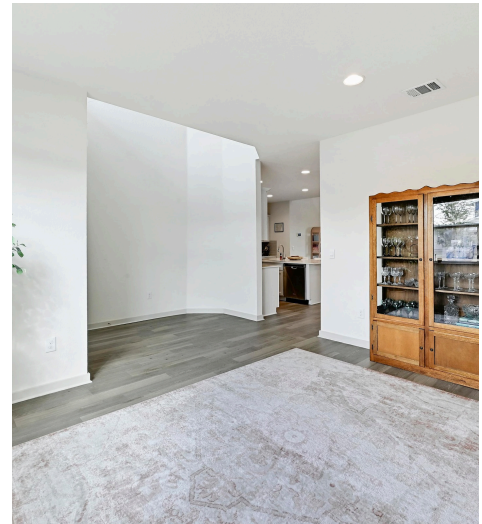




TOTAL: 2380 sq. ft
 1st floor: 1516 sq. ft, 2nd floor: 864 sq. ft
 EXCLUDED AREAS: OPEN TO BELOW: 437 sq. ft, WALLS: 168 sq. ft
Floor Plan Created By Cubicasa App. Measurements Deemed Highly Reliable But Not Guaranteed.



TOTAL: 2380 sq. ft
 1st floor: 1516 sq. ft, 2nd floor: 864 sq. ft
 EXCLUDED AREAS: OPEN TO BELOW: 437 sq. ft, WALLS: 168 sq. ft
Floor Plan Created By Cubicasa App. Measurements Deemed Highly Reliable But Not Guaranteed.



TOTAL: 2380 sq. ft
 1st floor: 1516 sq. ft, 2nd floor: 864 sq. ft
 EXCLUDED AREAS: OPEN TO BELOW: 437 sq. ft, WALLS: 168 sq. ft
Floor Plan Created By Cubicasa App. Measurements Deemed Highly Reliable But Not Guaranteed.

