

39 Pleasant Valley Road
Wimberley, TX 78676

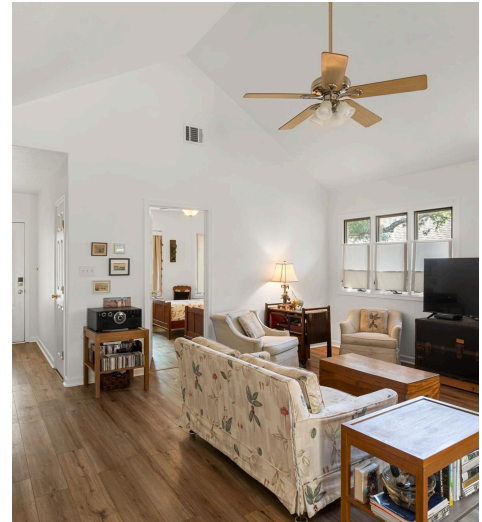
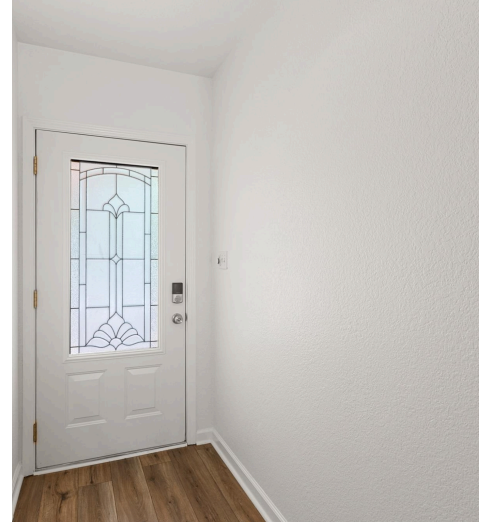


See online or with your mobile device:
<https://39pleasantvalleyroad.mls.tours>





Floor Plan Created By Cubicasa App. Measurements Deemed Highly Reliable But Not Guaranteed.



**TWIST
TOURS**

Pamela Shultz

Broker Associate

📞 512-923-3608

✉️ Pam@PamShultz.com

🌐 hillsoftexas.com/our-team/pam-shultz/



© 2025 331 Enterprises, LLC. All rights reserved. This floor plan is an approximation of existing structures and features and is provided for convenience only with the permission of the seller. All measurements are approximate and not guaranteed to be exact or to scale. Buyer should confirm measurements using their own sources.