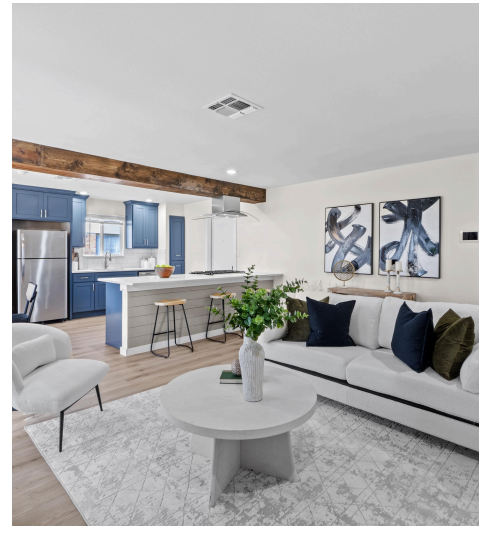
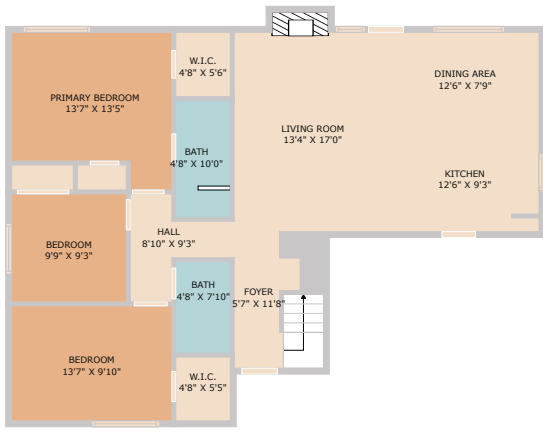


11216 Henge Drive  
Austin, TX 78759



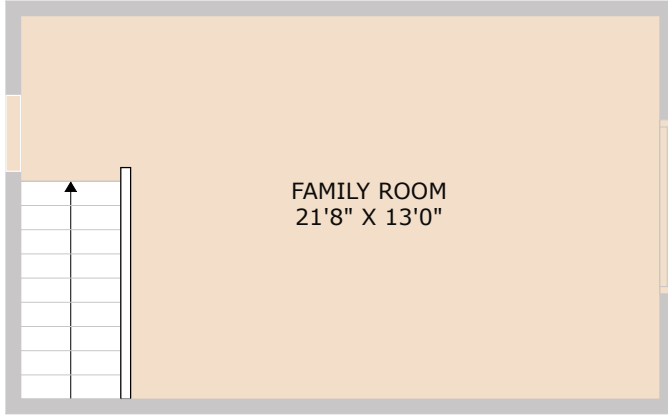
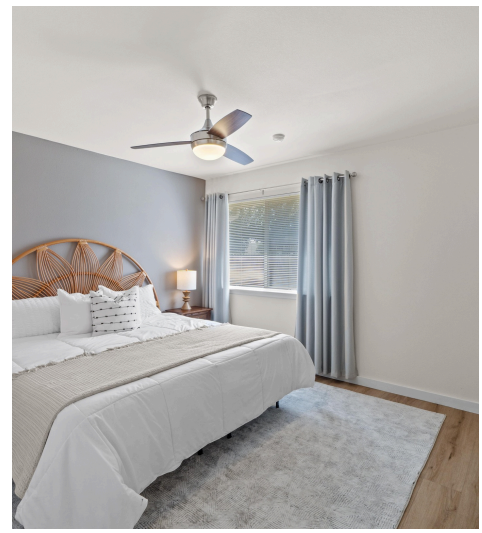
See online or with your mobile device:  
<https://11216hengedrive.mls.tours>





**TWIST  
TOURS**

TOTAL: 1438 sq. ft.  
FLOOR 1: 1154 sq. ft. FLOOR 2: 282 sq. ft.  
EXCLUDED AREAS: FIREPLACE: 10 sq. ft.  
Floor Plan Created by CadizLife App. Measurements Deemed Highly Reliable But Not Guaranteed.



**TWIST  
TOURS**

TOTAL: 1438 sq. ft.  
FLOOR 1: 1154 sq. ft. FLOOR 2: 282 sq. ft.  
EXCLUDED AREAS: FIREPLACE: 10 sq. ft.  
Floor Plan Created by CadizLife App. Measurements Deemed Highly Reliable But Not Guaranteed.



**TWIST  
TOURS**

TOTAL: 1438 sq. ft.  
FLOOR 1: 1154 sq. ft. FLOOR 2: 282 sq. ft.  
EXCLUDED AREAS: FIREPLACE: 10 sq. ft.  
Floor Plan Created by CadizLife App. Measurements Deemed Highly Reliable But Not Guaranteed.



## Ramirez Hospitality Group

Broker Associate, REALTOR®

📞 512.240.2810

✉️ rhgaustin@compass.com

🌐 www.rhgaustin.com



© 2025 TBD. All rights reserved. This floor plan is an approximation of existing structures and features and is provided for convenience only with the permission of the seller. All measurements are approximate and not guaranteed to be exact or to scale. Buyer should confirm measurements using their own sources.

