

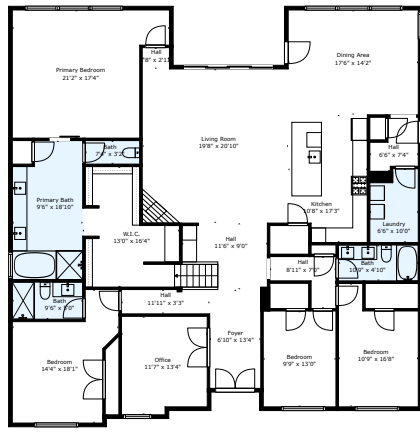
242 July Johnson Drive

Austin, TX 78737

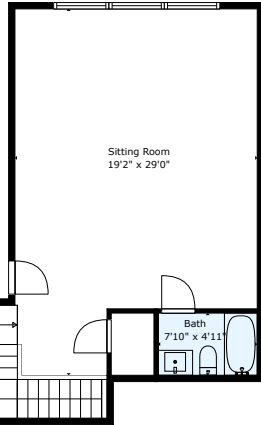


See online or with your mobile device:
<https://242julyjohnsondrive.mls.tours>

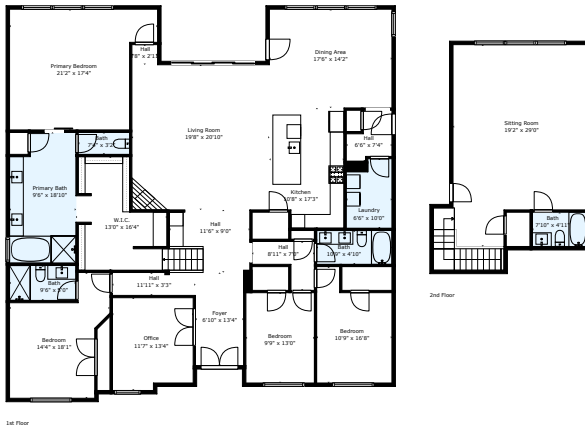




TOTAL: 3390 sq. ft.
 1st floor: 2785 sq. ft., 2nd floor: 605 sq. ft.
 EXCLUDED AREAS: HALL: 37 sq. ft., WALLS: 176 sq. ft.



TOTAL: 3390 sq. ft.
 1st floor: 2785 sq. ft., 2nd floor: 605 sq. ft.
 EXCLUDED AREAS: HALL: 37 sq. ft., WALLS: 176 sq. ft.



TOTAL: 3390 sq. ft.
 1st floor: 2785 sq. ft., 2nd floor: 605 sq. ft.
 EXCLUDED AREAS: HALL: 37 sq. ft., WALLS: 176 sq. ft.



Tana and Mark Hunt

📞 512-288-0093

✉️ tana.hunt@yahoo.com

🌐 tana-mark-hunt.teamprice



© 2026 331 Enterprises, LLC. All rights reserved. This floor plan is an approximation of existing structures and features and is provided for convenience only with the permission of the seller. All measurements are approximate and not guaranteed to be exact or to scale. Buyer should confirm measurements using their own sources.