

20926 Lakeshore Drive West
Spicewood, TX 78669



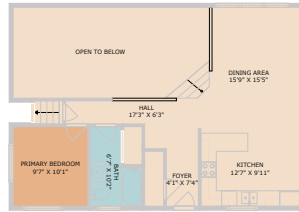
See online or with your mobile device:
<https://20926lakeshoredrivewest.mls.tours>





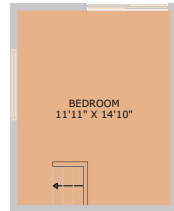
TWIST
TOURS

Plan Not Intended For Construction. Measurements Represent Approximate Dimensions. Buyer Should Verify Measurements.



TWIST
TOURS

Plan Not Intended For Construction. Measurements Represent Approximate Dimensions. Buyer Should Verify Measurements.



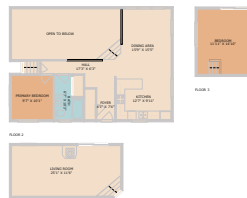
TWIST
TOURS

Plan Not Intended For Construction. Measurements Represent Approximate Dimensions. Buyer Should Verify Measurements.



TWIST
TOURS

Plan Not Intended For Construction. Measurements Represent Approximate Dimensions. Buyer Should Verify Measurements.



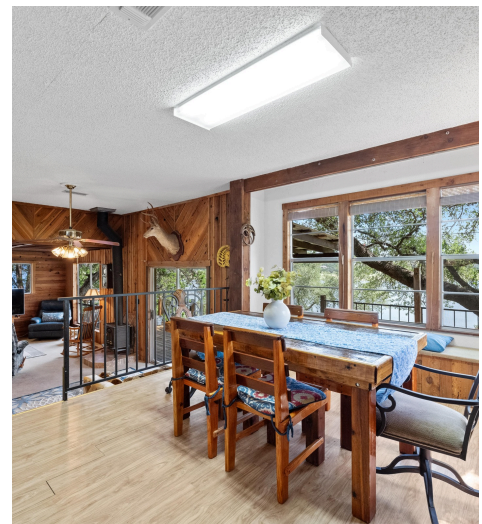
TWIST
TOURS

Plan Not Intended For Construction. Measurements Represent Approximate Dimensions. Buyer Should Verify Measurements.



Total Area: 1100 sq. ft.
Floor 1: 1000 sq. ft. (Living Room, Dining Room, Kitchen, Foyer, Primary Bedroom, Hall, Bath, and Stairs)
Floor 2: 100 sq. ft. (Garage)
Property Summary

1000 sq. ft. (Living Room, Dining Room, Kitchen, Foyer, Primary Bedroom, Hall, Bath, and Stairs)



Dee Thomas

REALTOR

(512) 298-5903

dee@txaustinhomesales.com

www.txaustinhomesales.com/

KW Austin
KELLER WILLIAMS
REALTY
Dee Thomas

© 2025 331 Enterprises, LLC. All rights reserved. This floor plan is an approximation of existing structures and features and is provided for convenience only with the permission of the seller. All measurements are approximate and not guaranteed to be exact or to scale. Buyer should confirm measurements using their own sources.

