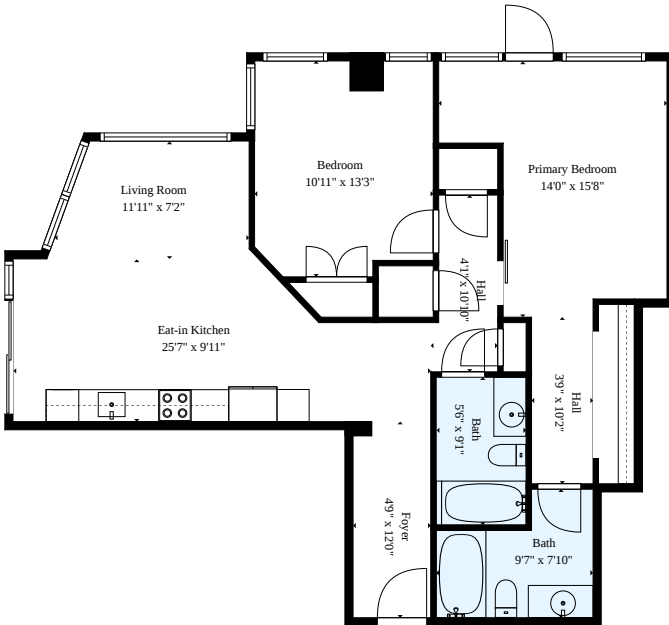


360 Nueces Street APT 3602
Austin, TX 78701



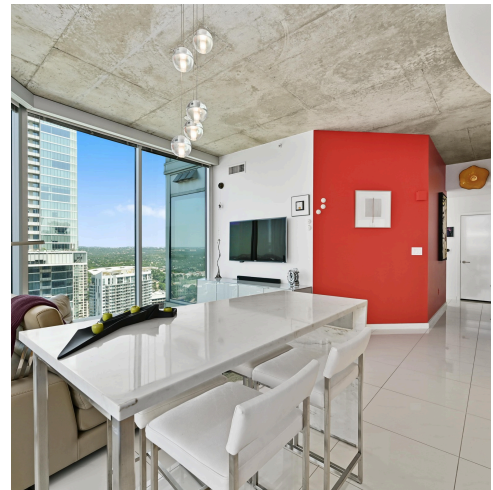
See online or with your mobile device:
<https://360nuecesstreetapt3602.mls.tours>





TOTAL: 959 sq. ft
 1st floor: 959 sq. ft.
 EXCLUDED AREAS: WALLS: 74 sq. ft

Floor Plan Created By Calcasieu App. Measurements Deemed Highly Reliable But Not Guaranteed.



Monica Blackburn

Realtor®

📞 512-695-7881

✉️ monica.blackburn.realtor@gmail.com

🌐 www.blairfieldrealty.com



© 2026 331 Enterprises, LLC. All rights reserved. This floor plan is an approximation of existing structures and features and is provided for convenience only with the permission of the seller. All measurements are approximate and not guaranteed to be exact or to scale. Buyer should confirm measurements using their own sources.

