

12716 Bismark Drive
Austin, TX 78748



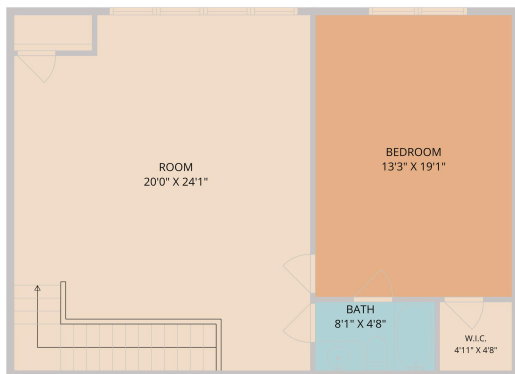
See online or with your mobile device:
<https://12716bismarkdrive.mls.tours>





**TWIST
TOURS**

Floor Plan Created By Calcsuite App. Measurements Deemed Highly Reliable But Not Guaranteed.



**TWIST
TOURS**

Floor Plan Created By Calcsuite App. Measurements Deemed Highly Reliable But Not Guaranteed.



**TWIST
TOURS**

Floor Plan Created By Calcsuite App. Measurements Deemed Highly Reliable But Not Guaranteed.



Home data report
12716 Bismark Drive, Austin, Travis County, Texas, United States, 78748



Total Area: 3115 sq. ft.
1st Floor: 2305 sq. ft., 2nd Floor: 810 sq. ft.
Excluded: Garage 504 sq. ft., Patio 1133 sq. ft., Walls: 205 sq. ft.

Property summary

2 Floors 4 Bedrooms 3 Bathrooms

Scan captured on Thu, 18 Jun 2025 18:43:08 GMT



© 2026 331 Enterprises, LLC. All rights reserved. This floor plan is an approximation of existing structures and features and is provided for convenience only with the permission of the seller. All measurements are approximate and not guaranteed to be exact or to scale. Buyer should confirm measurements using their own sources.

