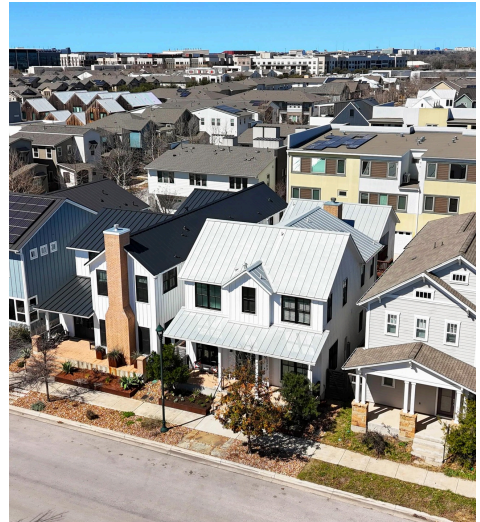
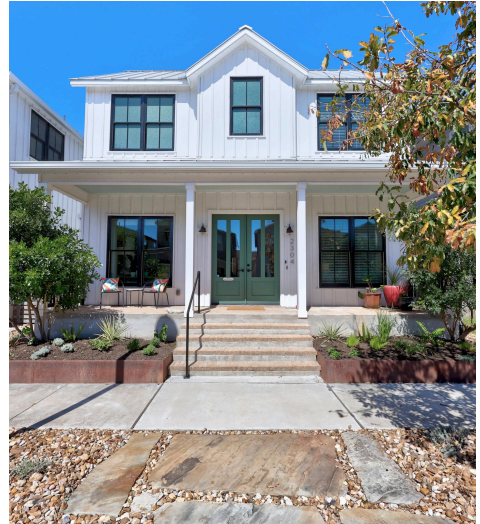
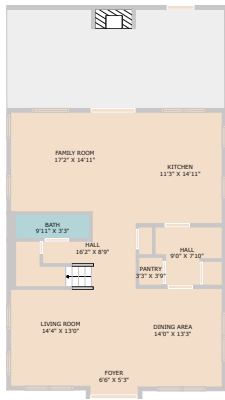


2304 McBee Street  
Austin, TX 78723



See online or with your mobile device:  
<https://2304mabee.com>

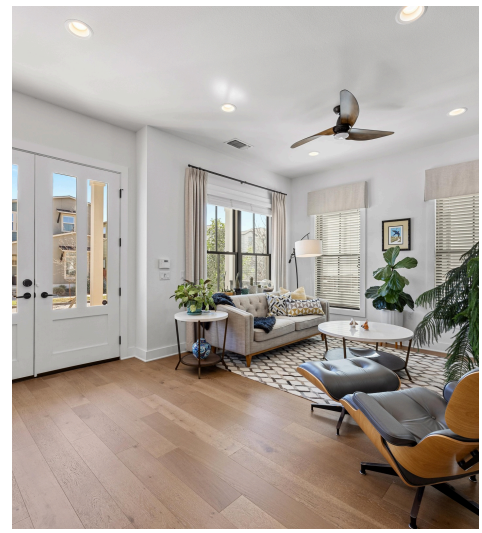




**TWIST TOURS**

TOTAL: 2076 sq. ft.  
 FLOOR 1: 1049 sq. ft., FLOOR 2: 1027 sq. ft.  
 EXCLUDED AREAS: OPEN TO BELOW: 23 sq. ft.

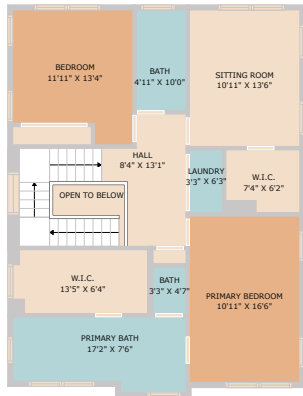
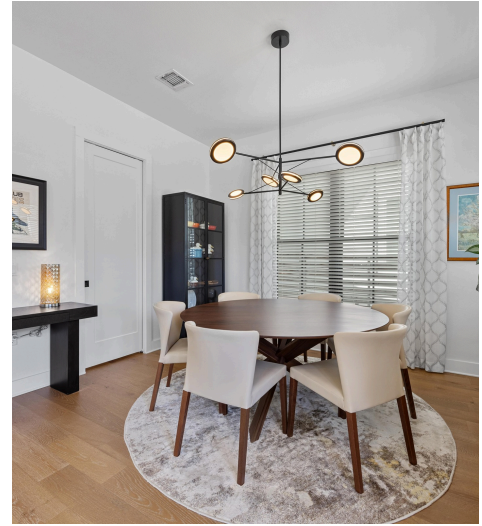
Floor Plan Created by CalAccess App. Measurements Deemed Highly Reliable But Not Guaranteed.



**TWIST TOURS**

TOTAL: 2076 sq. ft.  
 FLOOR 1: 1049 sq. ft., FLOOR 2: 1027 sq. ft.  
 EXCLUDED AREAS: OPEN TO BELOW: 23 sq. ft.

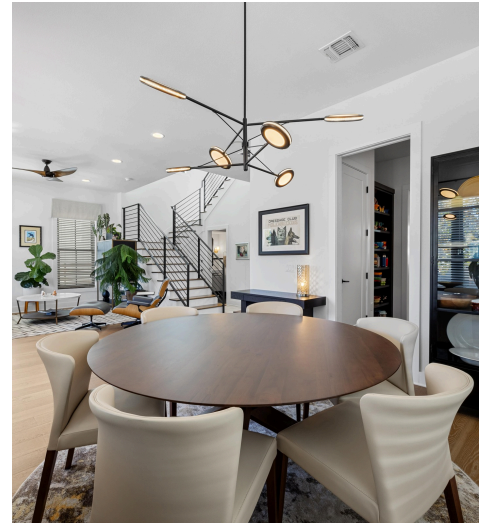
Floor Plan Created by CalAccess App. Measurements Deemed Highly Reliable But Not Guaranteed.



**TWIST TOURS**

TOTAL: 2076 sq. ft.  
 FLOOR 1: 1049 sq. ft., FLOOR 2: 1027 sq. ft.  
 EXCLUDED AREAS: OPEN TO BELOW: 23 sq. ft.

Floor Plan Created by CalAccess App. Measurements Deemed Highly Reliable But Not Guaranteed.



**TWIST TOURS**

TOTAL: 429 sq. ft.  
 FLOOR 1: 429 sq. ft.

Floor Plan Created by CalAccess App. Measurements Deemed Highly Reliable But Not Guaranteed.



© 2025 TBD. All rights reserved. This floor plan is an approximation of existing structures and features and is provided for convenience only with the permission of the seller. All measurements are approximate and not guaranteed to be exact or to scale. Buyer should confirm measurements using their own sources.