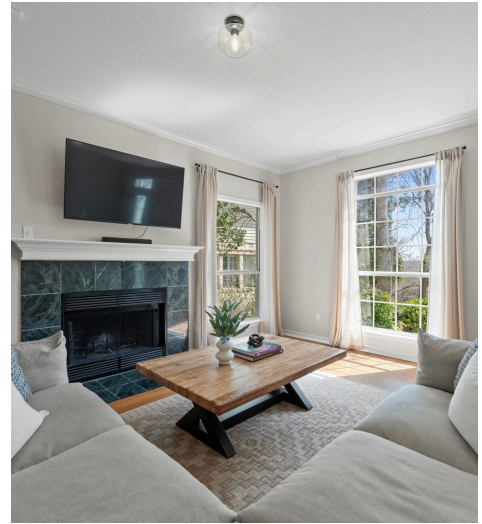
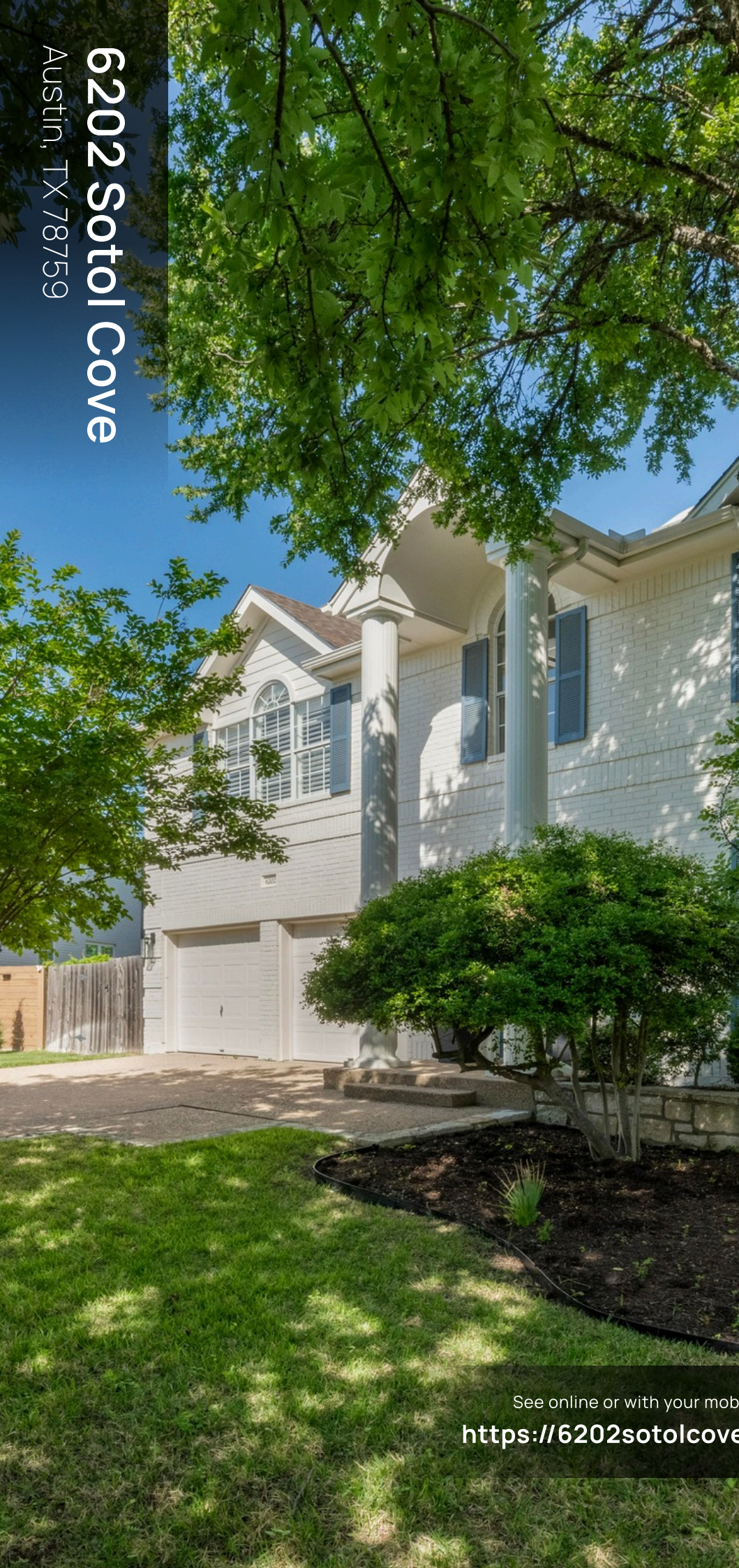
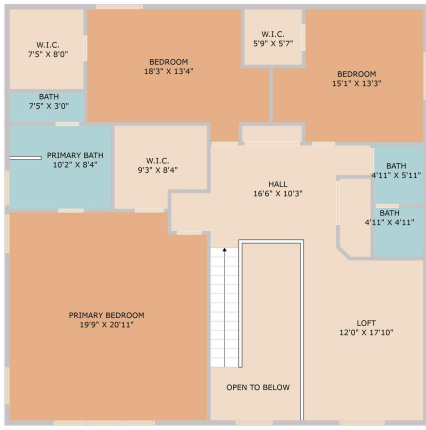


6202 SotoI Cove
Austin, TX 78759



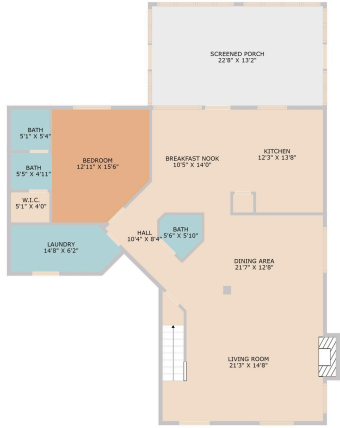
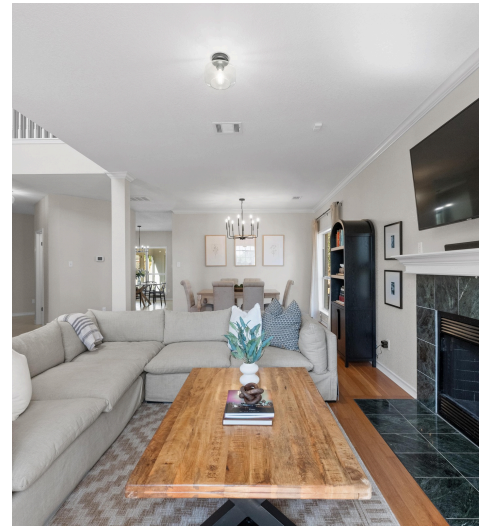
See online or with your mobile device:
<https://6202sotolcove.mls.tours>





TWIST TOURS

TOTAL: 2892 sq. ft.
 FLOOR 1: 1304 sq. ft. FLOOR 2: 1588 sq. ft.
 EXCLUDED AREAS: SCREENED PORCH: 299 sq. ft. FIREPLACE: 11 sq. ft. OPEN TO BELOW: 121 sq. ft.
 Floor Plan Created By: Callisto App. Measurements Deemed Highly Reliable But Not Guaranteed.



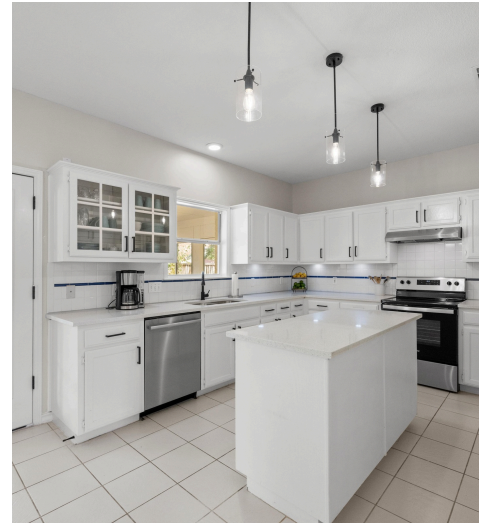
TWIST TOURS

TOTAL: 2892 sq. ft.
 FLOOR 1: 1304 sq. ft. FLOOR 2: 1588 sq. ft.
 EXCLUDED AREAS: SCREENED PORCH: 299 sq. ft. FIREPLACE: 11 sq. ft. OPEN TO BELOW: 121 sq. ft.
 Floor Plan Created By: Callisto App. Measurements Deemed Highly Reliable But Not Guaranteed.



TWIST TOURS

TOTAL: 2892 sq. ft.
 FLOOR 1: 1304 sq. ft. FLOOR 2: 1588 sq. ft.
 EXCLUDED AREAS: SCREENED PORCH: 299 sq. ft. FIREPLACE: 11 sq. ft. OPEN TO BELOW: 121 sq. ft.
 Floor Plan Created By: Callisto App. Measurements Deemed Highly Reliable But Not Guaranteed.



Allison Olson
 Broker Associate

📞 512-694-2251

✉ allison@moreland.com

🌐 www.allisonolson.com

MORELAND
 PROPERTIES

© 2025 331 Enterprises, LLC. All rights reserved. This floor plan is an approximation of existing structures and features and is provided for convenience only with the permission of the seller. All measurements are approximate and not guaranteed to be exact or to scale. Buyer should confirm measurements using their own sources.

