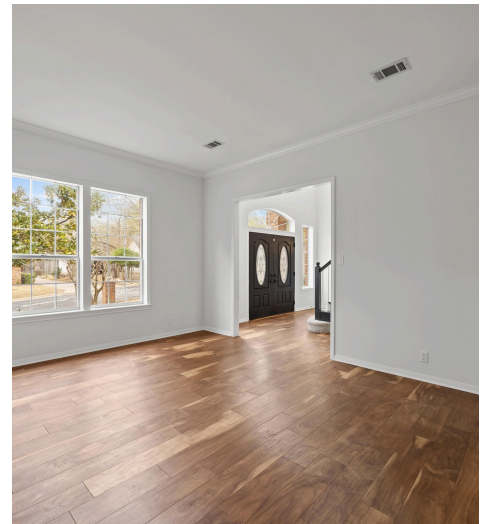
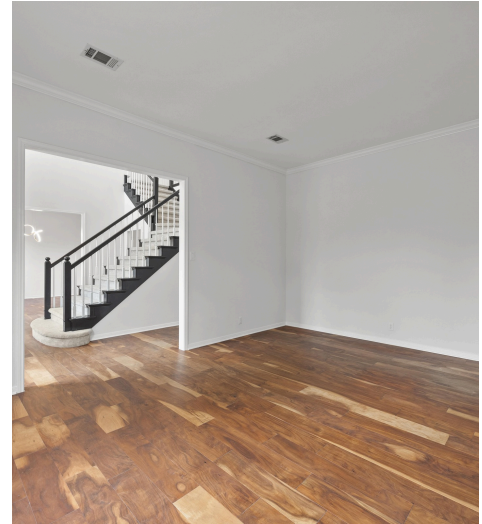
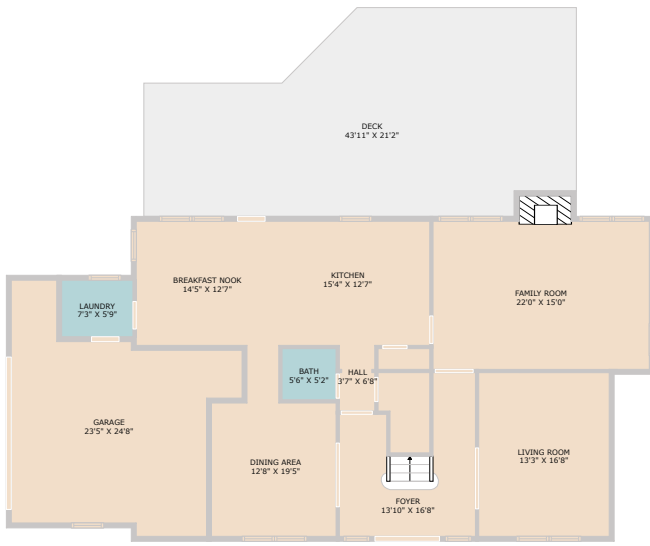


10107 Glencarrie Lane  
Austin, TX 78750



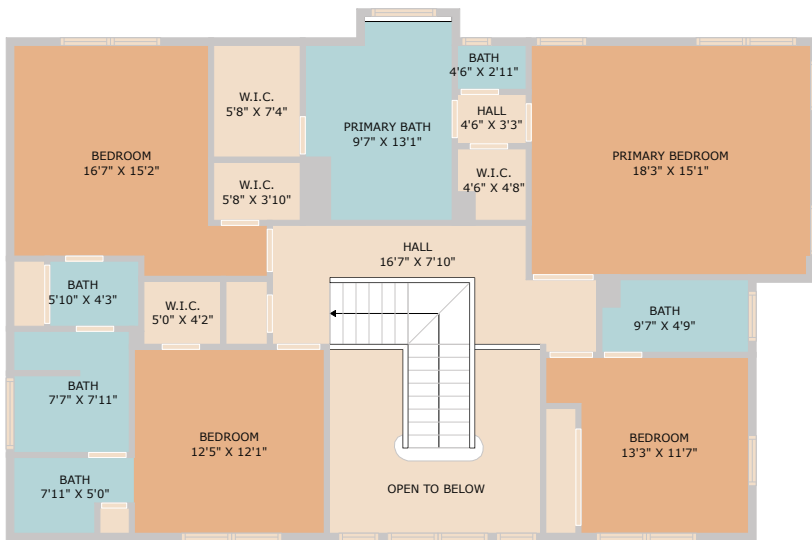
See online or with your mobile device:  
<https://10107glencarrielande.mls.tours>





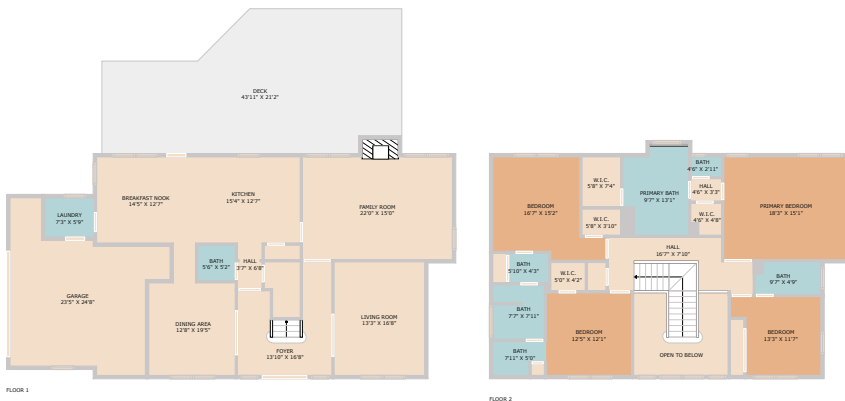
**TWIST  
TOURS**

**TOTAL: 2970 sq. ft.**  
 FLOOR 1: 1488 sq. ft., FLOOR 2: 1482 sq. ft.  
 EXCLUDED AREAS: GARAGE: 415 sq. ft., DECK: 779 sq. ft., FIREPLACE: 2 sq. ft.,  
 OPEN TO BELOW: 131 sq. ft.  
 Floor Plan Created by Cubicase App. Measurements Deemed Highly Reliable But Not Guaranteed.



**TWIST  
TOURS**

**TOTAL: 2970 sq. ft.**  
 FLOOR 1: 1488 sq. ft., FLOOR 2: 1482 sq. ft.  
 EXCLUDED AREAS: GARAGE: 415 sq. ft., DECK: 779 sq. ft., FIREPLACE: 2 sq. ft.,  
 OPEN TO BELOW: 131 sq. ft.  
 Floor Plan Created by Cubicase App. Measurements Deemed Highly Reliable But Not Guaranteed.



**TWIST  
TOURS**

**TOTAL: 2970 sq. ft.**  
 FLOOR 1: 1488 sq. ft., FLOOR 2: 1482 sq. ft.  
 EXCLUDED AREAS: GARAGE: 415 sq. ft., DECK: 779 sq. ft., FIREPLACE: 2 sq. ft.,  
 OPEN TO BELOW: 131 sq. ft.  
 Floor Plan Created by Cubicase App. Measurements Deemed Highly Reliable But Not Guaranteed.

© 2025 TBD. All rights reserved. This floor plan is an approximation of existing structures and features and is provided for convenience only with the permission of the seller. All measurements are approximate and not guaranteed to be exact or to scale. Buyer should confirm measurements using their own sources.

