

2703 Parker Drive  
Georgetown, TX 78628

LIVING ROOM  
15'8" X 16'3"

BATH  
7'7" X 8'0"

BATH  
5'2" X 8'1"

HALL  
11'7" X 6'0"

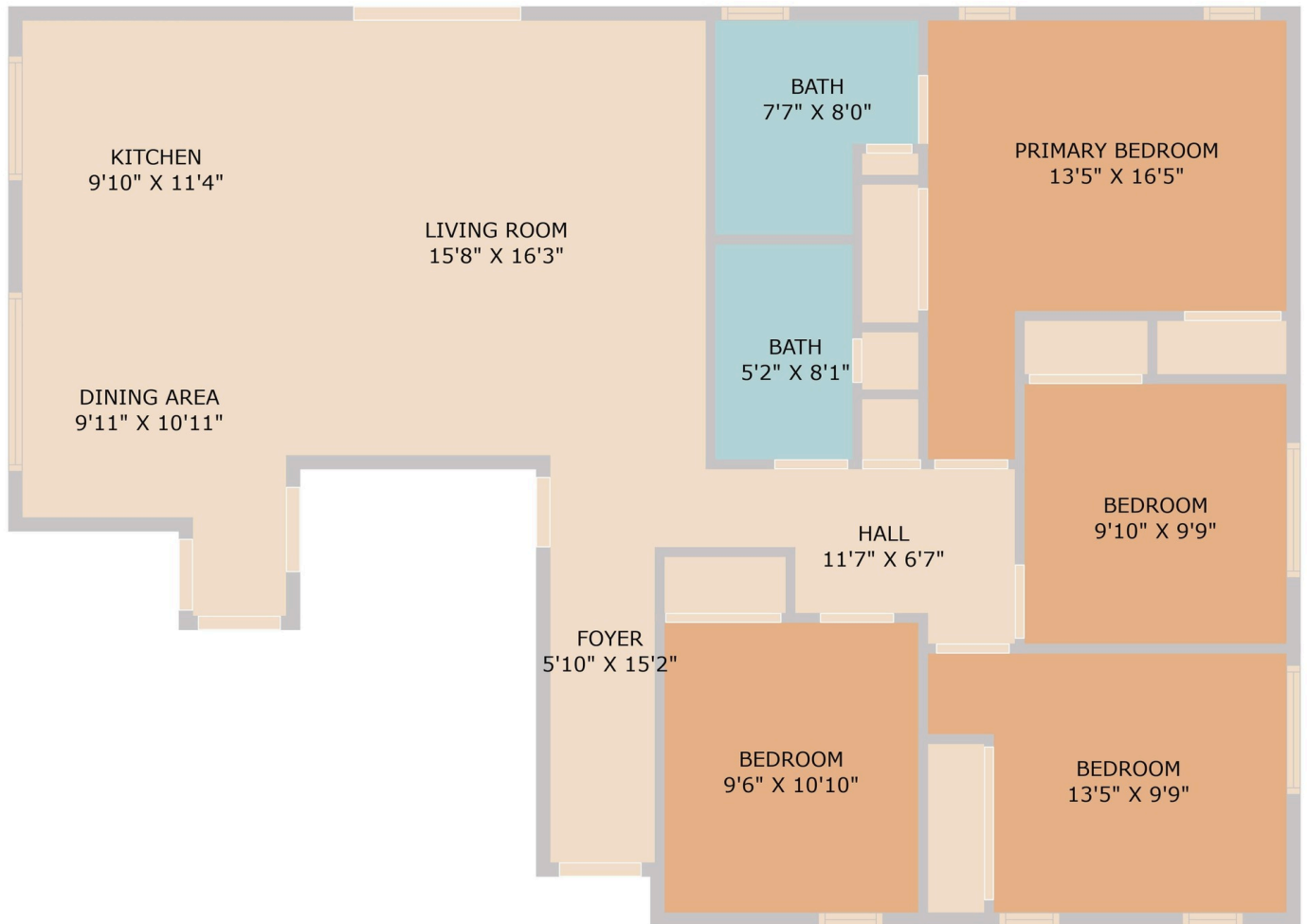
FOYER  
5'10" X 15'2"

BEDROOM  
9'6" X 10'10"

See online or with your mobile device:

<https://www.2703Parker.com>





**TWIST  
TOURS**

Floor Plan Created By Cubicasa App. Measurements Deemed Highly Reliable But Not Guaranteed.