

2703 Parker Drive  
Georgetown, TX 78628

LIVING ROOM  
15'8" X 16'3"

BATH  
7'7" X 8'0"

BATH  
5'2" X 8'1"

HALL  
11'7" X 6'0"

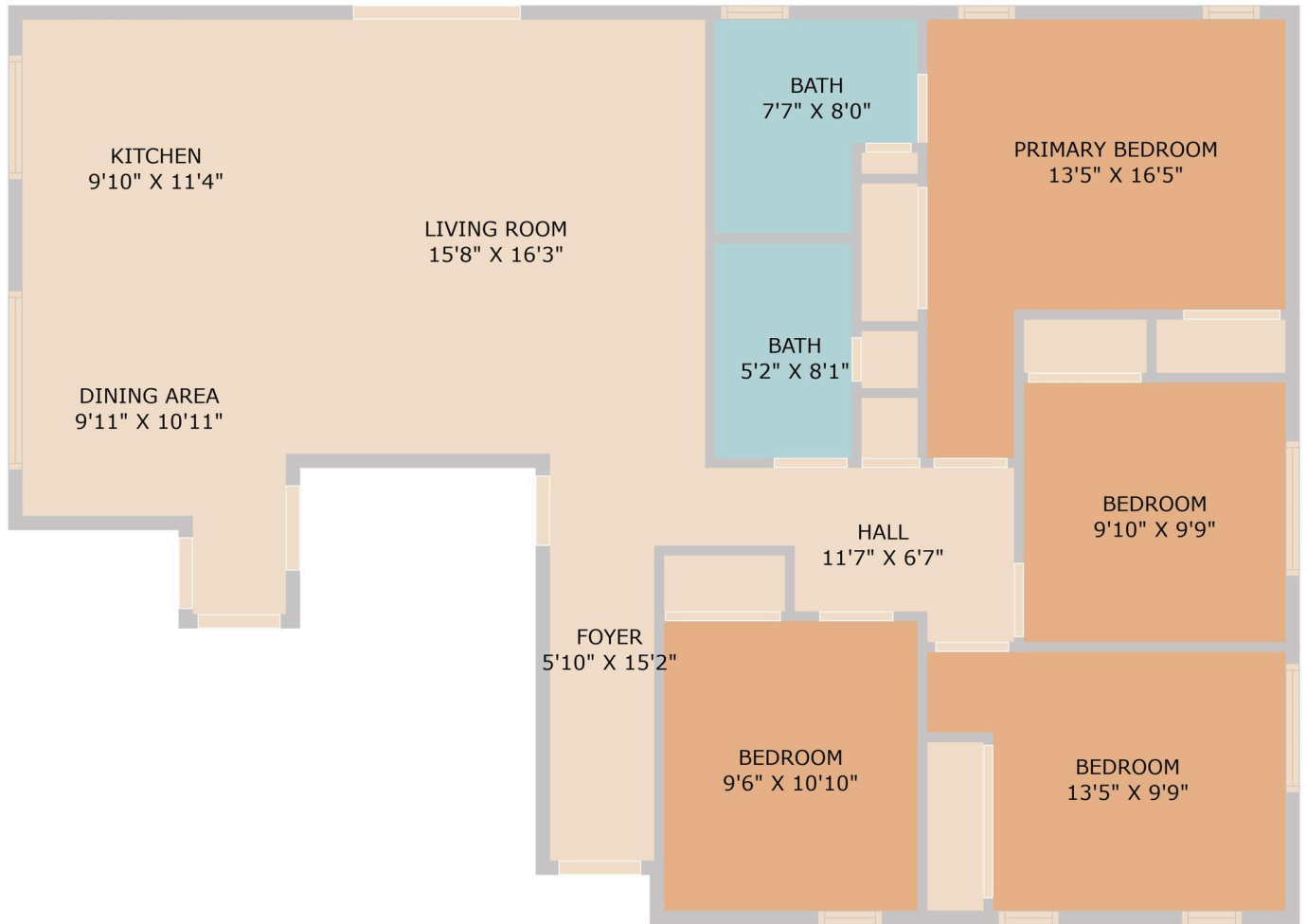
FOYER  
5'10" X 15'2"

BEDROOM  
9'6" X 10'10"

See online or with your mobile device:

<https://www.2703Parker.com>





Floor Plan Created By Cubicasa App. Measurements Deemed Highly Reliable But Not Guaranteed.



## Marion Lamantia

Realtor, CRS, CLHMS, GRI, ABR

📞 512-763-9178

✉️ Marion@MagnoliaRealty.com

🌐 <http://www.marionlamantia.com>



MAGNOLIA REALTY



© 2025 TBD. All rights reserved. This floor plan is an approximation of existing structures and features and is provided for convenience only with the permission of the seller. All measurements are approximate and not guaranteed to be exact or to scale. Buyer should confirm measurements using their own sources.