

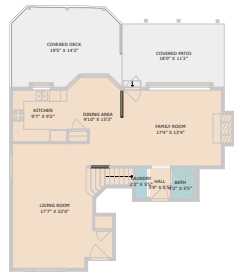
1400 Brook Way
Cedar Park, TX 78613



See online or with your mobile device:
<https://www.1400BrookWay.com>



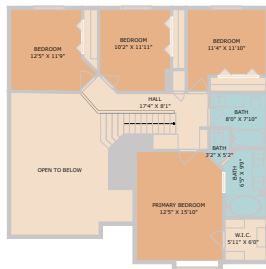
TWIST
TOURS



Floor Plan Created By: Customized Maps. Measurements Provided Only. Not To Scale. Not Guaranteed.

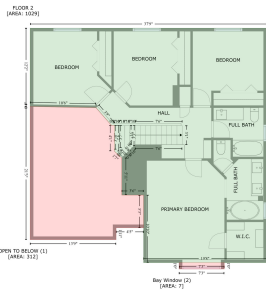


FLOOR 2
(AREA: 102)

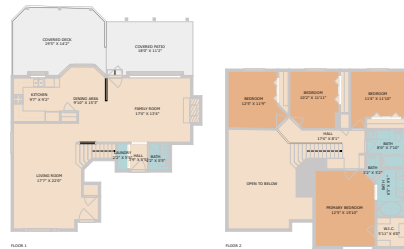


TWIST
TOURS

Floor Plan Created By: Customized Maps. Measurements Provided Only. Not To Scale. Not Guaranteed.



FLOOR 4
(AREA: 102)



FLOOR 5

FLOOR 6

TWIST
TOURS

Floor Plan Created By: Customized Maps. Measurements Provided Only. Not To Scale. Not Guaranteed.

Home report
1400 Brook Way, Buttercup Creek, Cedar Park,
Williamson County, Texas, United States, 78613

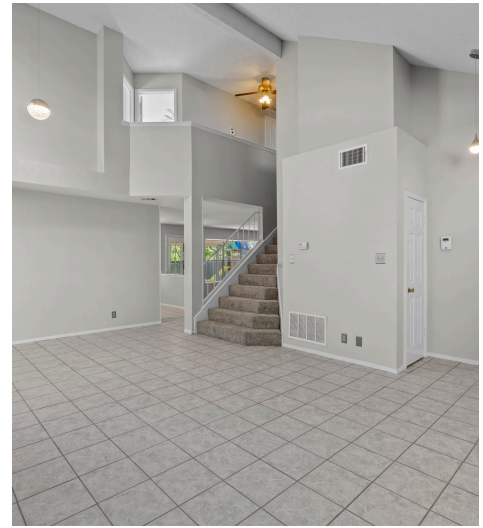


Total Area: 1853 sq. ft.
Floor 1: 886 sq. ft. Floor 2: 107 sq. ft.
Excluded: Covered patio 102 sq. ft., Covered patio 205 sq. ft., Embellishment 20 sq. ft.,
Fireplace 12 sq. ft., Open to below 232 sq. ft., Walls: 149 sq. ft.

Property summary



Open on Tue, 10 Sep 2023 10:00:00 AM



© 2025 331 Enterprises, LLC. All rights reserved. This floor plan is an approximation of existing structures and features and is provided for convenience only with the permission of the seller. All measurements are approximate and not guaranteed to be exact or to scale. Buyer should confirm measurements using their own sources.