

902 Warrington Drive

Austin, TX 78753



See online or with your mobile device:
<https://902warringtondrive.mls.tours>





**TWIST
TOURS**

Floor Plan Created By Cubicase App. Measurements Deemed Highly Reliable But Not Guaranteed.

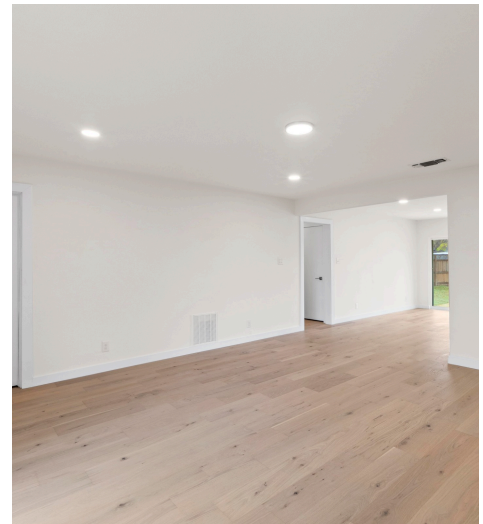
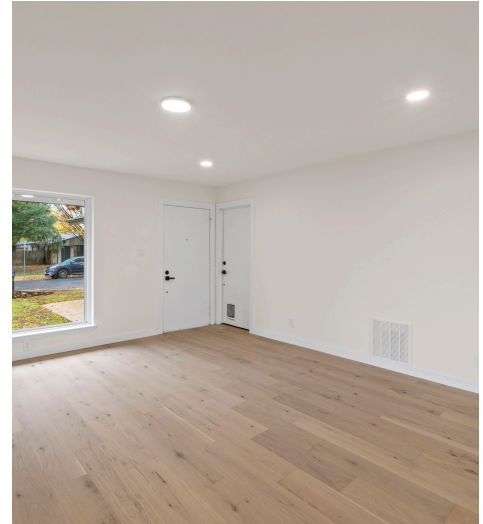
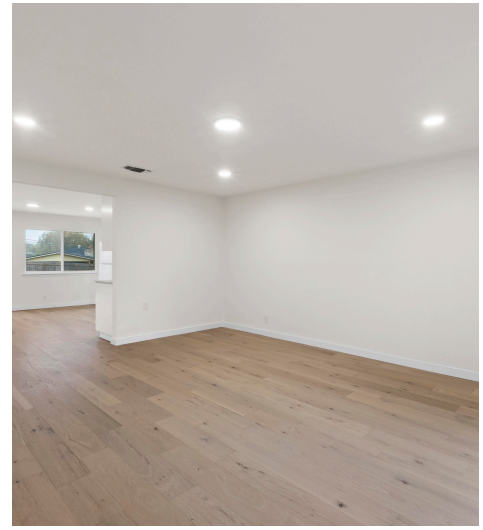
902 Warrington Drive, Austin, Travis County, Texas, United States, 78753
Gross Living Area: 1799 sq. ft.

Level 1



Space	Area (sq. ft)	Calculation
Deck (175 sq. ft.)	175	$(463.8 + 463.8) \times (12.5 - 402.2) + (463.8 + 463.8) \times (278.2 - 402.2) + (278.2 - 402.2) \times (402.2 - 402.2)$
Garage (424 sq. ft.)	424	$(264.4 + 264.4) \times (135.1 - 135.1) + (264.4 + 264.4) \times (135.1 - 135.1) + (135.1 - 135.1) \times (135.1 - 135.1)$

Report generated on 01/12/2025 10:00:00 AM
Measurements and calculations are deemed highly reliable, but not guaranteed.



Heidi Trevithick

Associate Broker, Realtor, GRI, APR, PSA

📞 5125697314

✉️ heidi@jbgoodwin.com

🌐 <https://www.heidisellsaustin.com>

JB Goodwin
REALTORS®

© 2025 331 Enterprises, LLC. All rights reserved. This floor plan is an approximation of existing structures and features and is provided for convenience only with the permission of the seller. All measurements are approximate and not guaranteed to be exact or to scale. Buyer should confirm measurements using their own sources.

