

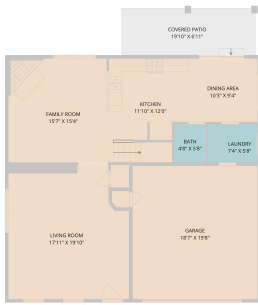
3811 Laurel Ridge Drive  
Round Rock, TX 78665



See online or with your mobile device:

<https://3811laurelridgedrive.mls.tours>





**TWIST  
TOURS**

Floor Plan Created by Colorize App. Measurements Shown are Approximate and Not Guaranteed.



**TWIST  
TOURS**

Floor Plan Created by Colorize App. Measurements Shown are Approximate and Not Guaranteed.



1ST FLOOR

2ND FLOOR

**TWIST  
TOURS**

Floor Plan Created by Colorize App. Measurements Shown are Approximate and Not Guaranteed.

Home data report  
3811 Laurel Ridge Drive, Round Rock, Williamson County, Texas,  
United States, 78665

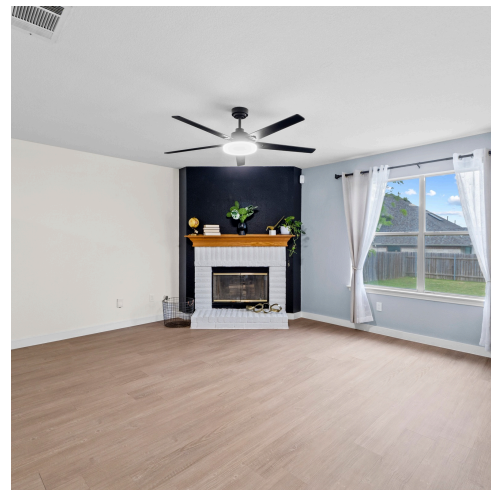


Total Area: 2179 sq. ft.  
1st Floor: 955 sq. ft. 2nd Floor: 1254 sq. ft.  
Excluded: Garage 366 sq. ft. Covered patio 137 sq. ft. Walk: 165 sq. ft.

Property summary



Real Estate.com PLS. © All Rights Reserved. 2024



**Albert Allen**

**Luxury Real Estate Advisor**

✉ [albert.allen@compass.com](mailto:albert.allen@compass.com)

🌐 [northwesthillsaustin.com/](http://northwesthillsaustin.com/)



© 2026 331 Enterprises, LLC. All rights reserved. This floor plan is an approximation of existing structures and features and is provided for convenience only with the permission of the seller. All measurements are approximate and not guaranteed to be exact or to scale. Buyer should confirm measurements using their own sources.