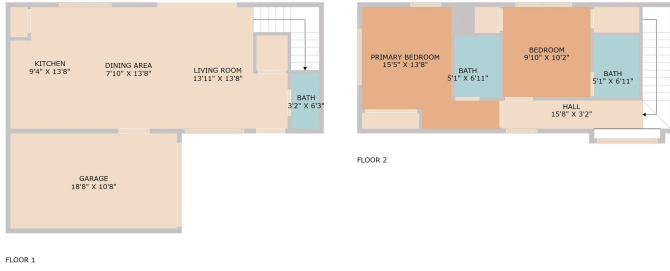


1306 Justin Lane #2
Austin, TX 78757



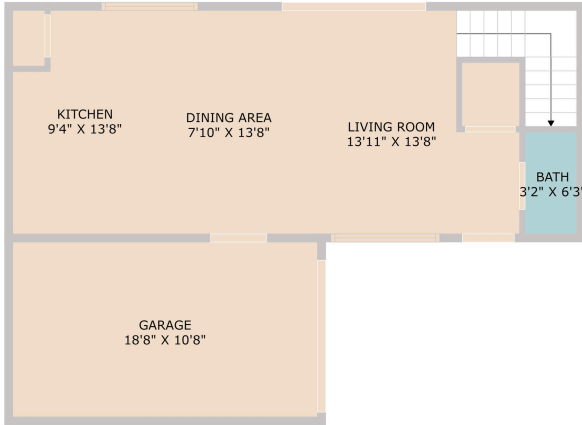
See online or with your mobile device:
<https://1306justinlane2.mls.tours>





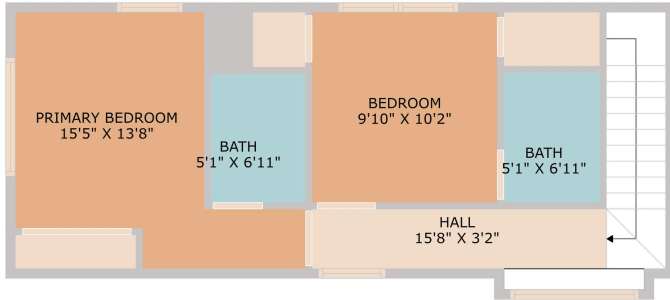
TWIST TOURS

TOTAL: 961 sq. ft.
 FLOOR 1: 475 sq. ft., FLOOR 2: 486 sq. ft.
 EXCLUDED AREAS: GARAGE: 201 sq. ft.
 Floor Plan Created By: Colleen Noy. Measurements Deemed Highly Reliable But Not Guaranteed.



TWIST TOURS

TOTAL: 961 sq. ft.
 FLOOR 1: 475 sq. ft., FLOOR 2: 486 sq. ft.
 EXCLUDED AREAS: GARAGE: 201 sq. ft.
 Floor Plan Created By: Colleen Noy. Measurements Deemed Highly Reliable But Not Guaranteed.



TWIST TOURS

TOTAL: 961 sq. ft.
 FLOOR 1: 475 sq. ft., FLOOR 2: 486 sq. ft.
 EXCLUDED AREAS: GARAGE: 201 sq. ft.
 Floor Plan Created By: Colleen Noy. Measurements Deemed Highly Reliable But Not Guaranteed.



Rebecca Jacks

Broker Associate

📞 512-529-2858

✉️ rebecca@11oaksrealty.com

🌐 <http://www.AustinRealEstateHomesBlog.com/>



© 2025 TBD. All rights reserved. This floor plan is an approximation of existing structures and features and is provided for convenience only with the permission of the seller. All measurements are approximate and not guaranteed to be exact or to scale. Buyer should confirm measurements using their own sources.